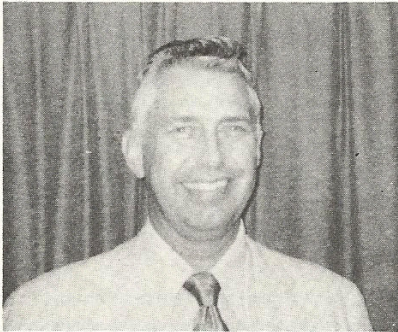


Four Corners Wonderland

by Mel Hullet



(Editor's note: Melvin Hullet was born and reared on a farm near Oakley, Kansas. He began his airline career with Frontier in 1958 at Muskogee, Oklahoma; was stationed at Great Bend, Kansas, Dodge City, Kansas, and Garden City, Kansas, before becoming station manager at Durango, Colorado. Mel is married and the father of two teenagers, Wayne and Dorothy.)

There is only one place in the nation where four states meet — marked by a low monument where a person literally can straddle Colorado, Utah, New Mexico and Arizona.

It is known as the "four corners area," but it is more than a geographical curiosity. It also happens to be a vacation and scenic wonderland whose focal points are the Frontier-served cities of Durango, Colorado; Farmington, New Mexico, and Cortez, Colorado.

If any of you yearn for smog-free and cool relaxation away from the big cities, but worry about the fuel crisis, rest assured you can fly to this Rocky Mountain paradise.

One of the most popular features in the Durango area is the Durango-to-Silverton regularly scheduled narrow gauge, coal



The balconies of the Tamarron condominiums will overlook a scenic and challenging 18-hole championship golf course, of which Mike Souchak will be the resident professional.

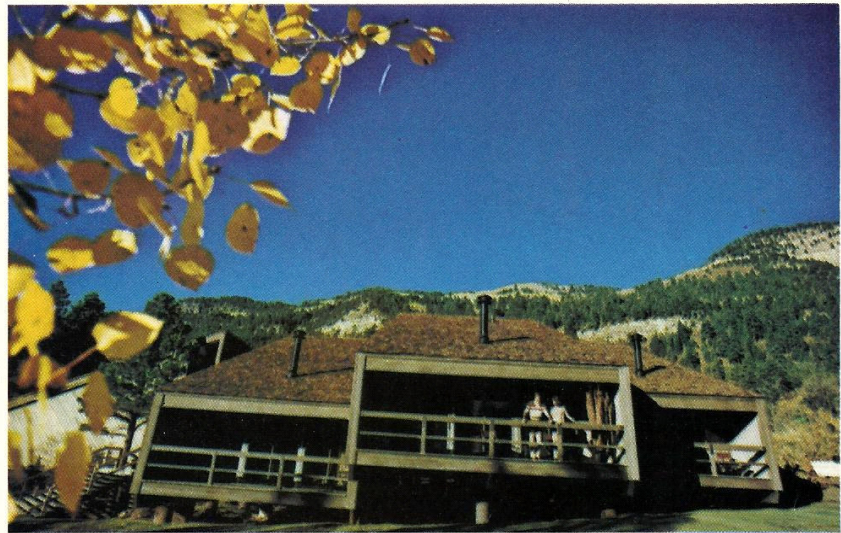
burning, passenger train. It is operated by the Rio Grande Railroad, and follows the valley and canyons of the Las Animas river (River of Lost Souls). For 45 miles, the railroad traverses a wilderness region otherwise accessible only by trail — no roads penetrate into the most beautiful portions of the route. The tour gives passengers ample time for lunch and sightseeing in the historic old mining town of Silverton, where the original buildings and houses are still in use today.

Golf Host West, Inc., is developing a \$34 million resort eighteen miles north of Durango and eight miles south of Purgatory Ski Area. The 650-condominium development, known as Tamarron, will have a full range of recreational facilities, including skiing, an 18-hole championship golf course, indoor tennis courts, a heated swimming pool and riding stables. Tamarron will have lodging for 800 guests when it opens in December 1974, with a total capacity for 2,300 visitors when the development is completed.

Dude ranches are numerous in the Durango area, with activities varying slightly from ranch to ranch. Riding is emphasized on all ranches and caters to both the experienced horseman and the beginner. All guest ranches have limousine service to the Durango Airport, and Tamarron — when completed — also will have limousine service to both the airport and Purgatory Ski Area. Rental cars are available at all airports served by Frontier, so forget the gas shortage and fly.

Farmington is known as the "Energy Capital of the West." For the Navajo Indians who have lived in the San Juan Basin for the past 600 years, the Farmington area is known as Totah, "where the rivers meet" — namely the San Juan, Animas and La Plata rivers. Major gas and oil discoveries in 1950 kicked off the decade of the "Fabulous 50's" and caused the population to increase seven fold. Farmington is ideal for visits to the Aztec ruins, Navajo Dam and the Navajo Indian Reservation, including famous Ship Rock.

Cortez and Durango are the gateway cities to Mesa Verde National Park. The park entrance is 10 miles east of Cortez

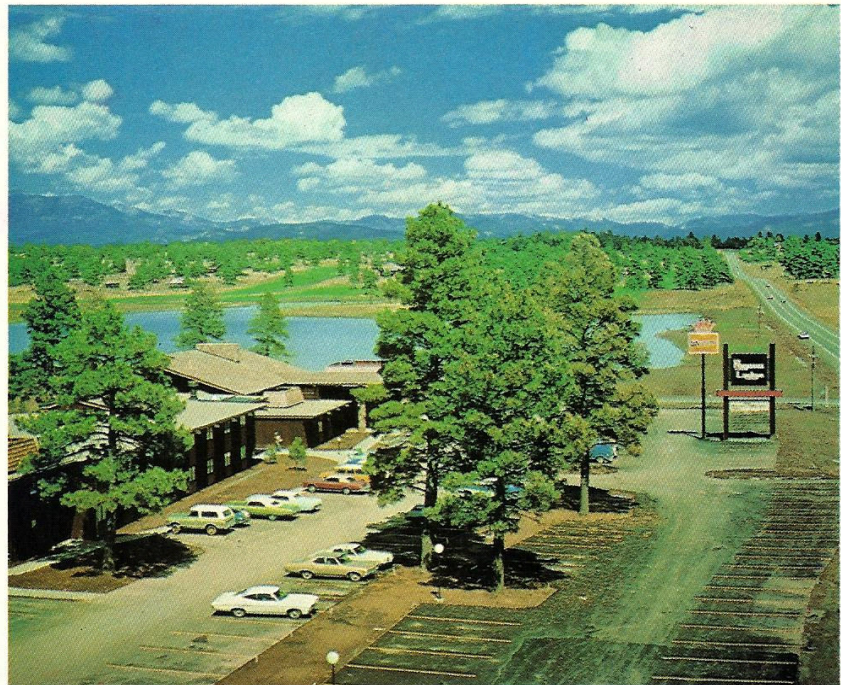


and 38 miles west of Durango. Bus service is available to the park from both cities.

Another fabulous narrow gauge steam train trip can be yours by flying Frontier to Alamosa or Durango, and riding the Cumbres and Toltec Scenic Railroad.

It is known as the slowest train in the West and follows a twisting, turning, 64-mile route through a lofty ridge of mountains between the tiny, two-sided ranch

(Continued on page 10)



Pagosa Lodge and Health Spa is located on Hwy. 160, 55 miles east of Durango, Colorado. This 60-room lodge (a Best Western affiliate) is literally the centerpiece of the 26,000 acre four-season resort community development known as Pagosa.

Why Econo-Car?

Because there's a fuel shortage and we're the car rental company that features economical, gas-saving cars, low rental rates, prompt airport pickup, and whenever possible we send you off with a full tank of gas.* That's why.

Call the Econo-Car office below for prompt airport pickup.

Albuquerque, NM	243-2226	Greenville, SC	232-5612	Pittsburgh, PA	262-1556
Atlanta, GA	726-8833	Halifax, CAN	453-2610	Portland, OR	252-5515
Augusta, GA	722-8812	Harlingen, TX	425-5348	Presque Isle, ME	In Terminal
Austin, TX	474-6636	Honolulu, HI	923-6557	Providence, RI	739-8440
Bakersfield, CA	324-1127	Houston, TX	442-2575	Richmond, VA	222-4108
Baltimore, MD	760-6767	Hyannis, MA	771-1400	Riverside, CA	686-5774
Bangor, ME	947-6131	Indianapolis, IN	638-5561	Rochester, NY	328-2880
Baton Rouge, LA	342-0070	Jackson, MS	948-3391	Sacramento, CA	444-7130
Binghamton, NY	722-1244	Jacksonville, FL	757-1197	Saginaw, MI	799-6688
Boston, MA	542-9800	Kansas City, MO	464-5656	St. Johns, NFLD	722-8293
Buffalo, NY	632-2881	Keene, NH	254-6067	St. Louis, MO	426-2323
Burbank, CA	843-4244	Las Vegas, NV	739-9315	St. Thomas, VI	775-6377
Calgary, CAN	264-6511	Los Angeles, CA	776-6184	Salt Lake City, UT	484-3993
Champaign, IL	359-4963	Louisville, KY	458-2692	San Antonio, TX	344-2381
Charleston, SC	744-7439	Madison, WI	256-5451	San Bernardino, CA	885-0718
Charlotte, NC	332-2233	Melbourne, FL	784-0622	San Diego, CA	232-2041
Chicago, O'Hare	297-7740	Memphis, TN	398-9626	San Francisco, CA	692-3274
Cincinnati, OH	621-5750	Miami, FL	445-8787	San Jose, CA	249-1525
Cleveland, OH	267-4080	Minneapolis, MN	854-3131	Seattle, WA	246-5588
Columbia, SC	252-2121	Moncton, CAN	855-5540	Shreveport, LA	636-6344
Columbus, GA	322-7774	Monterey, CA	373-2000	Spartanburg, SC	232-5612
Corpus Christi, TX	883-0845	Myrtle Beach, SC	272-6412	Spokane, WA	624-4124
Dallas, TX	352-8455	Nashville, TN	749-9690	Springfield, MO	831-2673
Daytona Beach, FL	235-6000	Newark, NJ	824-2288	Tacoma, WA	588-8800
Denver, CO	388-6436	New Bedford, MA	993-0111	Tampa, FL	879-6500
Detroit, MI	946-5350	New Orleans, LA	721-6746	Tucson, AZ	623-5807
Downey/L. Beach, CA	531-3488	NY LaGuardia	779-1700	Washington, DC(Nat.)	In Terminal
Fort Lauderdale, FL	763-7369	NY JFK	978-0800	West Palm Beach, FL	686-0853
Fort Myers, FL	936-5651	Norfolk, VA	622-8829	White Plains, NY	946-4046
Fresno, CA	226-2136	Orlando, FL	851-1692	Wichita, KA	943-2333
Galveston, TX	363-8641	Ottawa, CAN	235-6789	Wichita Falls, TX	723-2724
Grand Rapids, MI	363-6830	Pensacola, FL	438-3339	Wilkes Barre, PA	824-7185
Greensboro, NC	688-0431	Philadelphia, PA	521-4150	Worcester, MA	798-0106
		Phoenix, AZ	275-4429		

There are hundreds of other Econo-Car locations nationwide, including Hawaii, plus Puerto Rico and Canada. For the office nearest you, consult your white pages.

For free out of town reservations call **800-874-5000**

(From Florida: 800-342-5628; from Canada: 800-263-6470)

We're the money ^{and gas} saving answer when you want to rent a car. ^{need}

ECONO-CAR[®]
 "A Service of Westinghouse"[®]
 We feature Fords

*At Econo-Car you pay only for the gas you use.

(Continued from page 7)

town of Antonito, Colorado, and the Spanish-American community of Chama, New Mexico. It struggles upward over 2,000 feet, winding through lush groves of pine and aspen, edging along the dark granite rim of precipitous Toltec Gorge, and rising to the high point of Cumbres Pass — 10,015 feet above sea level.

Old Engine 484, a diminutive 2-8-2 Mikado coal-burner, heaves off billowing steam and sweet black smoke. Wheels click rhythmically, and the time-worn steam whistle wails mournfully.

In early 1967 the Denver & Rio Grande Western Railroad tried to abandon the line that had operated since 1883. The little train seemed headed for the limbo of vanished Americana, along with the buckboard and the stagecoach. However, railroad and history buffs launched a "Save the Narrow-Gauge" crusade that lasted three years, ending when Colorado and New Mexico purchased jointly the track and right-of-way between Antonito and Chama.

The first official tourist run took place June 26, 1971, and a great many runs are planned for the summer of 1974. In January of this year, railroad buffs bundled up and hopped aboard a steam-operated rotary snowplow for a look at how mountain tracks were cleared of snow back when steam reigned.

The railroad is now registered as a National Historic Landmark.

Located approximately 55 miles east of Durango and 3 miles west of Pagosa Springs, Colorado, is the beautiful Pagosa Lodge and Health Spa, a part of the Pagosa development of Eaton International Corporation of Phoenix.

Pagosa includes 40 square miles of Rocky Mountain resort facilities, including a golf course, tennis complex, condominiums, horse and hiking trails, campground, cluster communities — and friendly people.

If you're looking for winter sports, a few miles east of Pagosa Lodge is Wolf Creek Pass and Winter Sports Area. There's lots of snow — 400 inches a year is the average from early November right up to May. Wolf Creek is for the expert or the whole family. Here you can spend hours on the slopes on a crisp, sunny day wearing a light sweater. As you glide down the carefully groomed slopes, you'll marvel at the breath-taking panorama of the magnificent Rockies and the lush Rio Grande National Forest.

Transportation from Durango airport to Pagosa Lodge is available upon request.

It is impossible by the written word or even pictures to do the Four Corners area justice. If this short article has whet your appetite, just call your travel agent or Frontier Airlines.