

Sunliner News

VOL. 14—NOS. 3 AND 4

Published by Frontier Airlines

JUNE/JULY, 1965



FIVE JET-POWERED CONVAIR 580s lined up each noon at Stapleton International Airport in Denver are a big factor in the increasing passenger loads being carried in Frontierland with each passing month.

June Passenger Traffic Set New Records For Frontier

A 16 per cent increase in passengers carried in June on Frontier Airlines made it the best month in the carrier's 18 years of service. It broke the previous record set in August last year.

Total passengers in June numbered 64,900.

During June revenue passenger miles totaled 19,200,000 for a 14 per cent gain over June 1964 showings of 16,780,000.

"A surge in "See the U.S.A." vacation travel to the major national parks such as Yellowstone, Grand Teton, Mesa Verde, Grand Canyon and the Black Hills area which are all directly served by Frontier was a contributing factor in the June increases in passenger travel," Frontier's President Lewis W. Dymond said.

During June the average passenger flew 299 miles with Frontier. This is the highest average trip of any regional airline. The average passenger's trip among the thirteen carriers is 215 miles, including Frontier's contribution to this average.

First Five Months Show Revenue Gains In 1965

"Increasing public acceptance of Frontier Airlines' growing fleet of fast, jet-powered Convair 580 aircraft which now serve over two-thirds of the airline's cities and carry 56 per cent of the total revenue passenger miles flown is a major factor in the company's continuing growth in 1965," was the comment of Lewis W. Dymond, President of Frontier, as the financial results for the first five months of 1965 were reported.

Operating revenues totaled \$9,447,026 through May 1965, up \$519,178 compared with \$8,927,848 for the same period during 1964. This increase was achieved in spite of a sharp cut in Federal subsidy amounting to \$571,232.

Operating profit of \$829,415 is up 6.4 per cent over the \$779,691 reported for the first five months in 1964. Resulting net earnings came to \$344,192 up from the \$333,917 earned through May 1964.

Revenue passenger miles totaled 77,764,000 through May for an increase of 13 per cent or 8,791,000 over the 68,793,000 revenue passenger miles flown during the same period in 1964, notwithstanding a decrease of 5 per cent in total airplane miles flown.

Airport Improvements Parallel Expansion Of Convair 580 Services

Along with the introduction and the continuing expansion of Frontier Airlines' jet-powered Convair 580 services, there has been a corresponding program of expanding airport improvements across the length and breadth of Frontierland. Some thirty-three cities have either planned, are developing or have completed extensive new airport projects. These include runway extensions, new terminal facilities, improved navigational aids and/or better runway lighting systems.

The following is a recap of the improvements in the various cities served by Frontier Airlines. Symbols used in back of the name of each city indicate the type of airport improvement planned, underway or completed:

| | |
|-----------------------------------|---------------------------|
| Runway Extensions (R) | Terminal Improvements (T) |
| Navigational Aids (N) | Lighting for Runways (L) |
| ARIZONA: | |
| Flagstaff (N) (T) | Tucson (T) |
| COLORADO: | |
| Alamosa (R) | Denver (R) (T) (L) |
| Colorado Springs (T) | Gunnison (R) |
| Cortez (R) (N) | Grand Junction (R) (T) |
| Durango (N) (R) | Montrose (R) |
| MISSOURI: | |
| Kansas City (T) (N) | |
| NEBRASKA: | |
| Chadron (R) | McCook (R) (N) |
| Hastings (R) (N) | North Platte (T) (R) |
| Lincoln (T) | Scottsbluff (L) |
| | Sidney (R) |
| NEW MEXICO: | |
| Albuquerque (T) | Gallup (R) (N) |
| Farmington (R) (N) | Silver City (R) (N) (T) |
| NORTH DAKOTA: | |
| Bismarck (T) | Williston (R) (T) |
| SOUTH DAKOTA: | |
| Rapid City (T) (N) | |
| UTAH: | |
| Moab (T) (R) (L) (New Airport) | Vernal (R) (T) |
| WYOMING: | |
| Cody (R) | Laramie (R) |
| Casper (T) | Rock Springs (L) |
| Jackson (R) (N) | Riverton (L) |

With the favorable decision by the Civil Aeronautics Board in the Montana "Use It or Lose It" investigation, it is expected that new programs for airport improvements will be developed across the Treasure State. Until the final favorable ruling by the CAB all cities in Montana had deferred plans for airport development.

Frontier Airlines plans to have converted all fifteen of its Convair fleet to the jet-powered CV 580 by the spring of 1966. To accommodate these larger and faster aircraft those airports which were sufficient to receive DC-3 service will be developing new runway and other projects to make possible Convair 580 service to their cities.



M. E. O'NEIL
Vice President, Operations

ALAN BOYD FLIES CV 580



ALAN S. BOYD, UNDER SECRETARY OF COMMERCE for Transportation and former Chairman of the Civil Aeronautics Board (second from left) accompanied by Jack Yohie, Director of Public Information for the CAB (left) discuss with Frontier officers William J. Mitchell, Vice President of Sales/Service and Richard A. Fitzgerald, Vice President-Legal on their favorable impressions on the jet-prop Convair 580 which they had just flown from Albuquerque to Denver.

CAB Okays All Montana Service

All nine Montana cities served by Frontier Airlines will continue to be served for an indefinite period as a result of the Civil Aeronautics Board's decision in the Montana "Use It or Lose It" Investigation in mid-June.

In commenting on the CAB's action Lewis W. Dymond, President of Frontier said, "This favorable decision by the Board follows Frontier's request to the CAB that the examiner's recommendations be reversed. Frontier will now be in a position to increase the quality and frequency of service as soon as certain airport improvements have been made."

Dymond also added, "This decision is a most heartening tribute to the conscientious joint efforts exerted by the State of Montana, its congressional delegation, the affected communities and Frontier Airlines in proving beyond a doubt the real need for scheduled air service throughout Montana."

Frontier Applies For Routes To Los Angeles / Las Vegas

Application for an extension of Frontier Airlines' Denver/Grand Junction route to Las Vegas, Nevada via Moab, Utah and Grand Canyon, Arizona including non-stop authority between Denver and Las Vegas and Denver/Grand Canyon was made in late June.

At the same time the carrier applied for an extension of its routes beyond Phoenix to Los Angeles via Palm Springs and San Diego and beyond Phoenix to Salt Lake City via Flagstaff, Grand Canyon and Las Vegas.

Frontier's proposals would provide direct service from Denver/Grand Junction and the many cities east and north of Denver to the entertainment capital of Las Vegas and to the fabulous Grand Canyon National Park. Additionally, it would create direct air service to Las Vegas and the Grand Canyon from Albuquerque and Four Corners area.

Extension from Phoenix to Los Angeles will provide direct one-carrier service from Tucson and other Frontier served cities east of Phoenix to Palm Springs, San Diego and Los Angeles.

The Phoenix/Salt Lake City extension will make possible one-carrier direct service between Tucson and other Frontier served cities of Flagstaff, Grand Canyon and Las Vegas.

Packaged Frontierland Vacations Attract Nationwide Interest

"One of the most complete vacation travel programs to be conducted by any transportation company is now showing results in hundreds of confirmed bookings to the Frontierland vacation areas which are being packaged by Frontier Airlines," is reported by William J. Mitchell, Vice President of Sales and Service.

In cooperation with President Johnson's appeal for national support for the expanded goals of the "See the USA" tourism efforts being sponsored by the United States Travel Service, Frontier Airlines has undertaken a comprehensive four point vacation travel program:

1. Unlimited 11-state 30-day travel for \$100 for United States residents.
2. Nine all expense package vacation plans.
3. "Campus in the Sky" study tour for college credits.
4. Air-rail combined national park tours.

Frontier's low cost \$100 Vacationland Fare makes it easier for vacationists to see the great west. It permits up to 30 days of unrestricted, unlimited air travel over Frontier's 6,100 route mile system. It can be used by anyone living in states wholly east of the Mississippi



THOUSANDS OF PACKAGE VACATION KITS are assembled by a busy work crew of sales/service personnel, pitching in to get distribution to travel agencies are (back row facing camera) Ron MacLeod, cargo sales; Carl Ross, sales; Don Grover, interline sales; Pat Stutheit, secretary-sales; William J. Mitchell, Vice President of Sales/Service and Tom Brungardt, sales. (Front row back to camera) Ann Yanulavich, secretary-sales; Jean McFarland, secretary-sales; Bill Rowley, Manager-Agency, Tour and Interline Sales and Art Giffin, sales.

River, in the Pacific coast states or Hawaii and Alaska. The fare can also be used by visitors from overseas, Mexico or Canada.

Easily combined with this special low fare are the nine specially developed packaged vacation itineraries to nine "best of the West" scenic areas. These include such major national parks as Yellowstone, Grand Teton, Grand Canyon, Carlsbad Caverns, Mesa Verde and the newly designated Canyonlands. In addition plans have been developed for the Black Hills of South Dakota, the historical Santa Fe/Taos country of New Mexico and the colorful Mexican Border cities of Juarez/El Paso.

An ambitious fully accredited "Campus in the Sky" educational program has been undertaken with the two leading universities of Denver and Nebraska. Five quarter hours of graduate credit can be earned in Ethnology and Geography which combine campus classes



AGENCY AND INTERLINE SALES get the undivided attention of Lawrence C. Sills, director of sales, William J. Mitchell, Vice President of Sales/Service and Bill G. Rowley, Manager—Agency, Tour and Interline Sales in planning for the summer vacation season.

and "Campus in the Sky" in-the-field studies. Three semester hour graduate credits can also be earned with seven days of in-the-field study at major civilian and military installations in the Rocky Mountain/Southwest combined with classes at the University of Nebraska in aerospace education.

Cooperating with the Burlington Railroad, the railroad nationally renowned for its interest in passengers and its successful packaging of tours, Frontier has developed two unique air-rail tours for seeing the heartland of four national parks.

Backing these programs are a full scale advertising, promotional and sales program aimed at shaping the vacation plans of Americans and visitors from overseas.

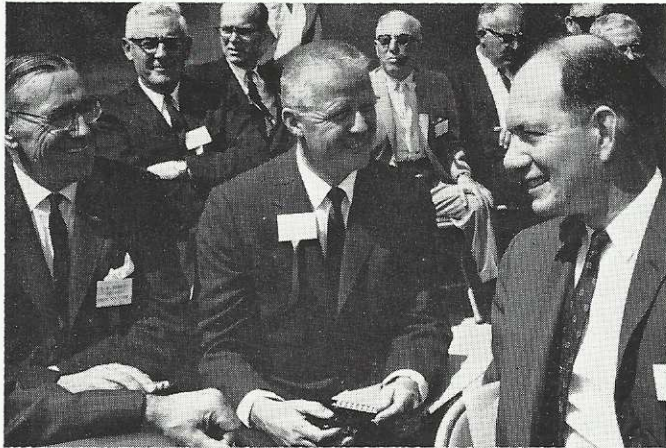
To implement these programs some 10,000 kits of material have been sent to travel agencies and airline offices throughout the world. A special eight-page newspaper on vacation fun, the FRONTIER ENTERPRISE, was mailed to those requesting the paper from coupons in ads placed in newspapers and magazines. Interline and agency sales calls used color slide presentations across the country and in Europe.

Results from the program has brought in thousands of inquiries backed by solid bookings. It all indicates that this is indeed the year to "See the USA."



THOUSANDS OF VACATION KITS are readied for mailing from Frontier's sales/service office. Making a final check on kit contents are Pat Stutheit and Helen Blair, secretaries in the sales/service department.

Spokane Dedication Attracts Vips



DEDICATION OF THE SPOKANE TERMINAL attracted aviation notables to the Inland Empire of Washington. President, C. E. Woolman of Delta Airlines, President, Lewis W. Dymond of Frontier and Under Secretary of Commerce for Transportation, Alan S. Boyd discuss the growth of aviation into the Northwest.

Governors of Thailand Visit Frontier Camp



GOVERNORS FROM THAILAND IN SOUTHEAST ASIA receive a letter of welcome from the city of Denver, presented by Don Martin, Director of Stapleton International Airport. The Governors visited Yellowstone and Grand Teton National Parks as part of their tour of the United States, sponsored by the US Department of State.

Non-Stops Okayed Between Omaha And Kansas City And Between Albuquerque And Tucson

New non-stop operating authority was given Frontier Airlines in the reopened Southern Rocky Mountain Area Case between Albuquerque and Tucson and new one-stop service between Albuquerque and Phoenix. The new service went into effect June 10.

On July 9 Frontier also begins new non-stop service between Kansas City and Omaha with continuing service to Denver via intermediate Nebraska cities of Lincoln, Grand Island, North Platte and Scottsbluff.

Jet-powered Convair 580 aircraft are operated on the two routes effected by the new Civil Aeronautics Board authority. Greater passenger appeal and faster elapsed time are the major advantages to come with the non-stop operations.

(Identity of "Recognize this Place?" picture bottom of Column one of this page)

Another of the many scenic attractions to be viewed while flying Frontier is Arizona's famed Meteor Crater located just west of Winslow.

About 22,000 years ago a million tons of meteorites hurtled out of the northern sky at a speed of 10 miles per second. Hitting with the explosive wallop of 60 million pounds of TNT equal to 30 hydrogen bombs each having a force of 1 million tons of TNT, the fiery mass blasted a crater three-quarters of a mile across and driving to a depth of 1500 feet through solid rock.

The crater was first reported by white men in 1871 but it was not until 1902 that a mining engineer from Philadelphia, Daniel M. Barriner, proved that it was created by a cluster of falling meteorites.

Recognize This Place?

(See Next Column)



New Advertising Agency Named By Frontier Airlines

New advertising agency for Frontier Airlines is Kenyon and Eckhardt of New York City. The account will be taken over by the agency on August 1 and will be handled in Denver by an account executive of the agency.

Kenyon and Eckhardt is one of the country's leading advertising agencies. Included among its 27 accounts are Anaconda Copper, Canadian Pacific, Ford Motor, Magnavox, National Biscuit, Pabst Brewing, Quaker State Oil Refining and Shell Oil.

In announcing the selection of the new agency, William J. Mitchell, Vice President of Sales and Service commented, "Frontier's plans to aggressively expand its programs for summer and winter vacations along with connecting air services with all sections of the country were major factors in seeking Kenyon and Eckhardt's services with their multiple offices in major eastern, midwest and west coast markets."

Six More Cities Receive Jet Powered Convair 580



RIBBON CUTTING AT SANTA FE was officially performed by Pat Hillis, Mayor and Jack Campbell, Governor of New Mexico and Lewis W. Dymond, President of Frontier Airlines.



JET-AGE AIR SERVICE TO VERNAL, UTAH was inaugurated with the official snipping of the commemorative ribbon by city and county officials assisted by Frontier's Jim Montgomery, Director of Customer Service, Frank Merrill, Sales/Service Manager at Vernal and Lawrence C. Sills, Director of Sales.



← MOAB'S DISTINCTIVE NEW TERMINAL receives the first convair 580 flight inaugurating jet service to this Utah city.



↑ FRONTIER'S VICE PRESIDENT OF SALES/SERVICE, William J. Mitchell with the Frontier group which gathered with Gunnison's civic leaders to commemorate new jet-powered service to this resort capital.



COLORADO'S STEEL CITY NOW HAS DAILY JET-PROP CONVAIR 580 service. Inaugurating the service are Frontier's President, Lewis W. Dymond; Georgia Farbough, President of City Council; James Ballas, Chairman of the Aviation Committee with an assist from Oliver Brunz, Sales/Service Manager at Pueblo.

↓ CONVAIR 580 SERVICE AT SILVER CITY presents a scenic flight to this New Mexico copper mining center. Daily service provides non-stop air links to Albuquerque and Tucson.

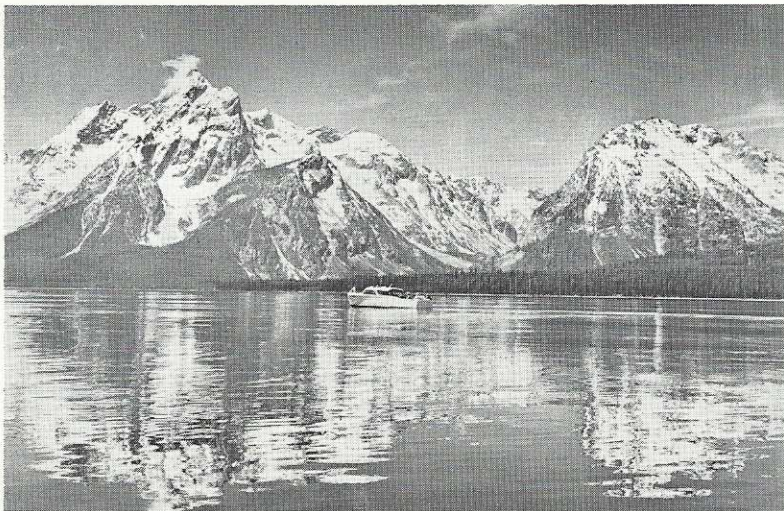
A total of 38 cities now receive jet-powered Convair 580 service with the recent scheduling of additional CV 580 flights to the six cities of Pueblo, Santa Fe, Silver City, Gunnison, Moab and Vernal. Ribbon cutting ceremonies attended by city and Chamber of Commerce officials, plus full coverage by the local news media, were on hand at each terminal building as the first turbine powered CV 580 pulled up on the ramp with an incoming group of Frontier Airlines officers and management team members.

Nine of the 580s are now in service carrying over 56 per cent of passenger miles recorded this past month.



TIPS FOR TRIPS

BY ANN YANULVICH



MAJESTIC GRAND TETONS mirror their snow capped peaks in the trout-filled waters of Jackson Lake.

Our western national parks, favorite vacation spot of Americans and foreigners alike, is in full swing for a summer season that promises to be the biggest ever. What a great vacation you could have in the national parks of Fabulous Frontierland — Grand Teton, Yellowstone, Rocky Mountain, Grand Canyon, Mesa Verde, Canyonlands, Carlsbad Caverns and Mount Rushmore National Memorial.

Grand Teton and Yellowstone National Parks are truly a vacation paradise offering a variety of recreation sure to please everyone. These areas offer most every type of lodging — dude ranches, tent camps where you can rent all equipment if you like, lodges both large and small, luxurious and modest.

Signal Mountain on Teton Park Road offers a real view of the entire Grand Teton area. After a long and winding ride up the mountain offering a new and beautiful view at each turn, you reach the observation point offering an unbelievable view of Jackson Lake, Jenny Lake, Colter Bay, the beautiful Teton Range, etc., etc.

For a really different view of the Teton area, the six-hour, 30-mile float trip via large rubber rafts down the Snake River is a real experience. Each raft accommodates 18 people and your guide is ready and willing to offer any information regarding the area. As you leisurely float down the river, you will see many birds and animals native to this area. At mid-day a stop is made at Deadman's Bar for a picnic style lunch served by your guide. After lunch and a chance to roam the area, you continue on down the river for more spectacular views.

If you are a real early bird, you can leave at sunup for a horseback ride accompanied by a guide who not only offers you much info on the Teton area but also saves the day by brewing a huge pot of coffee over an open fire and serves you a real cowboy style breakfast. This trip would offer you a real sightseeing experience in the true western atmosphere.

Hiking fans will find this area a real experience. If you would enjoy some really intensive exploring of the Park, there are many marked trails. If you are a real experienced mountain climber, scaling the Grand Teton may be just the challenge you are looking for.

A short drive north from Grand Teton National Park will bring you to the grand daddy of them all — Yellowstone National Park. Yellowstone is bear country and seems to have more than its share of these professional comics. The antics of these

cute little bears (?) have amused tourists for many years.

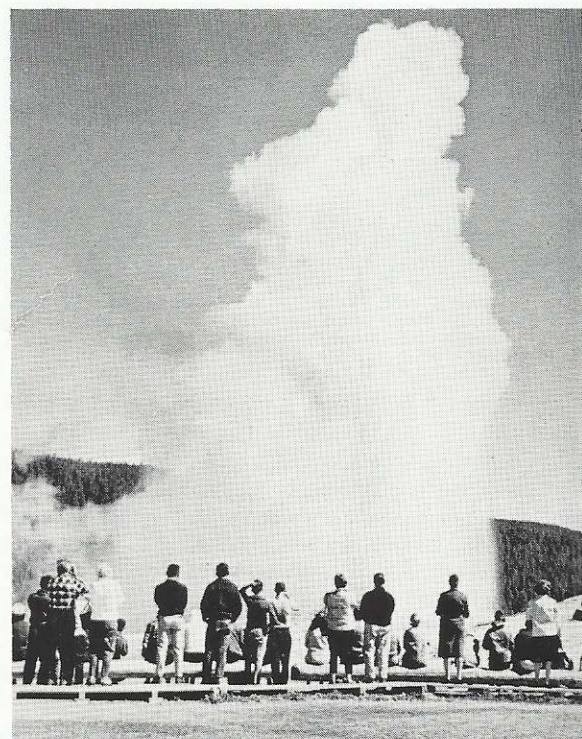
There are many sights in Yellowstone—Old Faithful Geyser (said to be the most photographed wonder in the world) is truly spectacular as it erupts approximately every hour. There are 10,000 other exciting thermal features such as the Paintpots, bubbling and steaming against the backdrop of sparkling Yellowstone Lake at West Thumb.

To many people Norris Geyser Basin is the most exciting basin in the park. Some of its many thermal features are within a great hollowed-out bowl called Porcelain Basin within which roaring steam vents provide eerie sound effects as you walk through.

The Grand Canyon and Lower Falls of the Yellowstone River are "sure" sights to see. The Lower Falls may be reached only by trail to the brink of the falls. Twice as high as Niagara, the waterfall thunders 308 feet into the canyon. If you visit the falls in the morning when the sun is shining, you will see a rainbow in the spray. The Upper Falls (viewed without climbing) are almost as spectacular in their mighty thundering roar though they drop only 109 feet.

Camera bugs will find both of these parks a real delight as there is no end to the beautiful shots of wildlife and natural scenery.

The little town of Jackson, Wyoming (gateway to both of these parks) offers big city entertainment all summer. This little spot turns into a "swingin'" place when the tourists hit town. Best of all, dress at most any of the spots in town is casual.



OLD FAITHFUL GEYSER puts on a spectacular every hour for approximately two million visitors who go to Yellowstone National Park.



Interline Exchanges Foster Added Goodwill Between Airlines

More than 32 per cent of Frontier Airlines' total passenger revenues are derived from passengers flown to Frontier's terminal cities by connecting carriers. As summer vacation travel increases so do the fortunes of Frontier as folks from everywhere head for our hills to enjoy the vacation of a lifetime.

Closer relationships between Frontier and its interline friends are now a major portion of all of the carrier's sales and promotion programs. Here on this page is a good indication of the success of these efforts.

Interline passenger traffic growth will play a big part in the future expansion of Frontier Airlines' service throughout the west. Both summer and winter package vacation plans tied in with the \$100 Vacationland Area fare are particularly attractive to vacationists living outside of Frontier's trade area.



AMERICAN AIRLINES INVITED STEWARD-ESS Phyllis Geck, Salt Lake City to see the Ford Tri-Motor at the New York World's Fair along with stewardesses from 10 other local service airlines.



UNITED AIR LINES SEMINAR for Vice Presidents and Interline Managers of all local service carriers was held in Honolulu. William J. Mitchell, Vice President of Sales/Service of Frontier (left) and Bill G. Rowley, Manager—Agency, Tour and Interline Sales, Frontier (right) meet with A. J. Schoeph, Assistant Vice President and General Sales Manager for United Air Lines prior to the seminar.



COOKING UP A BIG DEAL for the 4th annual airline Sun Country Holidays steak fry in Phoenix October 21 through 24 are left to right: Jack Zabriskie, Frontier; Norman Hill, Continental; Dick Inderrieden, Trans World; Paul Harding, Western and "Lucky" Leverett, Phoenix Chamber of Commerce.



TAKING TIME FOR A "TRIP INTO YESTERDAY" six airline representatives await the "All Aboard!" from the engineer for the narrow gauge trip from Silverton to Durango. Left to Right: J. W. Hays CAL, HOU; George Nadler TWA, LAX; William Chaney BNF, DAL; Carol Olson CAL, CHI; Shelia Pizer TWA, CHI; Don Grover FAL, Interline Sales and Harriet Knapp CAL, LAX.



TOURING UNITED AIR LINES' MAINTENANCE BASE in San Francisco are sales/service managers for Frontier and Central Airlines. First row, left to right: H. Hopkins CEN, COS; D. Johnson FAL, CNY; T. Clark FAL, PUB; J. Snider FAL, CYS; H. Cauthron FAL, RIW. Second row, left to right: G. B. Justice, Sales Manager UAL, DEN; C. Krebs CEN, DEN; D. Rice FAL, BFF; A. Hadler FAL, GRI; T. Jeter, FAL, COS; R. Duffek FAL, RAP.

Astronaut Grissom Gets Gala Greeting In Gunnison



ASTRONAUT VIRGIL "GUS" GRISSOM gets official welcome from left to right: Lewis Dymond, president of Frontier; Governor John Love, Colorado and United States Senator Gordon Allott during ceremonies at Gunnison, Colorado.



NEWS MEDIA REPRESENTATIVES had a happy hour interviewing and photographing the man from outer space, Virgil "Gus" Grissom in the terminal building of the Gunnison Airport.



First man to go into space twice, Major Virgil I. "Gus" Grissom received a real warm western welcome when he and his wife and two sons flew to Gunnison, Colorado for a week of skiing at Crested Butte following his successful Gemini flight with Copilot John W. Young.

Frontier Airlines Convair 580, dubbed the "Molly Brown Special" carried a full load of official greeters headed by Governor John Love, United States Senator Gordon Allott and Frontier's President, Lewis Dymond. Also aboard the flight were representatives from newspapers, television and radio from the Denver area who recorded the gathering at the Gunnison airport in depth for their readers, viewers and listeners.

Following ceremonies and presentations of appreciation gifts a gala parade from the airport through Gunnison sent the Grissom family happily on the way for a holiday on the powdered slopes of Crested Butte.



New Frontierland Map Highlights Major Attractions



New, multi-colored map folders featuring the scenic heartland of the great west now unfold to passengers hundreds of the attractions on view while "flightseeing" with Frontier. Some 50,000 of the four-color maps were printed by Jeppeson and Company using a matte finished paper which accentuates the three-dimensional effects of terrain features.

Dotting the 11-state area mapped for Frontier in the Rocky Mountain West, Southwest and Midwest are the unduplicated attractions of nine national parks, 32 national monuments, 33 other major points of interest, 40 Indian reservations and 25 major ski areas directly served by the jet-powered fleet of Convair 580s flown by Frontier.

NEW FRONTIERLAND MAP gets a final check before printing from Tom Morphis, District Sales Manager for Frontier; Lawrence C. Sills, Director of Sales; Roy Marriott, Sales Representative for Jeppeson and Company and Dave Burr, Administrative Assistant, Sales/Service.



Banks Use Courier Air Service

Courier service is used by Mesa National Bank, Grand Junction, Colorado to fly some 2500 non-negotiable checks and deposit slips each day to the Denver United States National Bank in Denver. Kenneth Stemler (left) Manager of Military and Cargo Sales and Charles Derby, data center, Denver US Bank, give pouch of checks to Station Agent, Charles Marquez.

In addition to banks, Frontier's Courier Service is also used daily by pharmaceutical, electrical, architectural and other firms to air freight parcels up to five pounds in weight for the low cost of only \$3.00 between any two cities on Frontier's 11-state system.

Employee Evaluations Evolve



COMMITTEE FOR EMPLOYEES EVALUATIONS get together to work up rules and procedures to develop new forms for recording employee performance. Left to right: John Glendenning, senior Denver reservations agent; Ora Goode, Sales/Service Manager Glasgow, Montana; standing is committee chairman, Walter Rea, Sales/Service Manager Durango, Colorado; Paul Lawson, Sales/Service Manager Alliance, Nebraska and general office representative, David Burr, Administration Assistant, Sales/Service Denver.

Division Chief Stewardess Named For Denver and Phoenix

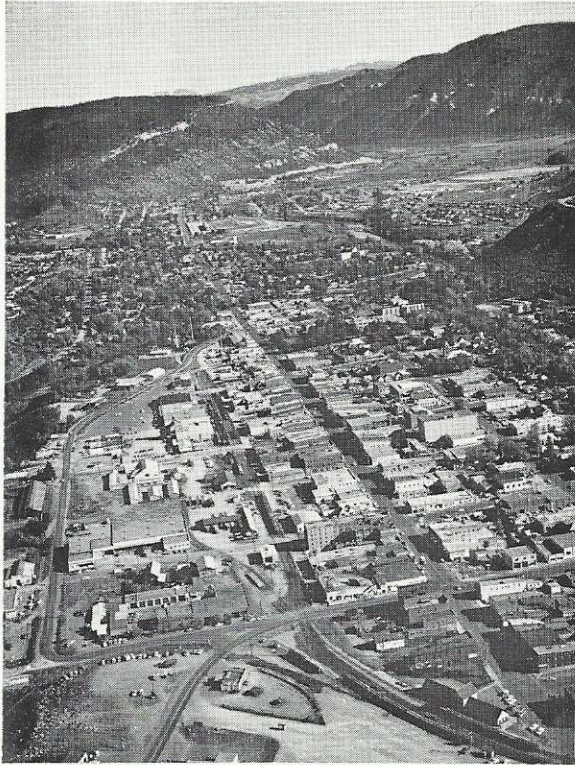


BUSSELL—DENVER DIVISION CHIEF STEW. New division chief stewardess for Frontier in Denver is Marguerite Bussell. Marge had been the airlines division chief stewardess in Phoenix since 1960. She joined the carrier in 1956 as a Denver-based stewardess. Three years later she became division chief stewardess in Omaha before transferring to Phoenix.



ADAMS—PHOENIX DIVISION CHIEF STEW. Dianne Adams has been named as division chief stewardess in Phoenix for Frontier filling the vacancy of Marguerite Bussell who has transferred to Denver. Dianne joined Frontier in 1962. After graduating from the carrier's stewardess training school in Denver she was assigned to Frontier flights out of Phoenix where she has been working to this time.

Profile . . . Four Corners Area Where The Journey Into Yesterday Begins



DURANGO'S MAIN STREET is an active hub mixed with shoppers, friendly townspeople and a bee hive of visitors joining in the gaiety of the 1890's offered in the restored melodrama playhouse, old time saloons and this nation's last regularly scheduled narrow gauge railroad.

Backtracking two thousand years, in this land of contrasts, an unusually industrious people moved onto the great, flat-topped mountain called Mesa Verde (Green Table) in the area of what is now Colorado and known today as the Four Corners area. Here they built a flourishing culture and evolved distinctive multi-unit dwellings tucked under protective sandstone ledges on sheer sided canyon walls. These cliff dwellings stood the test of time for hundreds of years until a period of drought dried up the springs and streams forcing this advanced Indian culture to abandon their home and to scatter over areas now named Arizona and New Mexico.

For nearly seven hundred years these ingeniously constructed cliff dwellings harbored only mice and owls until they were rediscovered by cowboys from the new town of Durango in the 1880's while rounding up stray cattle.

Up to this time and hundreds of years after the cliff dwellers left the area, the only real inhabitants were the Ute Indians who were using the valleys as hunting grounds during summer. The invasion of whitemen forced the Ute to push on to other areas, not without incident, however.

Nearby, the new homesteaders settlement, the town of Animas, had already grown to a population of over two thousand. It was advanced enough to even have its own town newspaper as well as several stores. The new town of Durango, actually just down the street was growing fast too. Dancehall saloons, stores and hotels were operating now and it was time to start planning and growing to become a city. The first stake

for the survey of the city of Durango was driven in September 1880.

The Denver and Rio Grande Railroad puffed into Durango in 1881 on a track just three feet wide with little coaches that bounced and jerked from side to side behind the engine chugging large billows of black smoke and cinders. In the coaches were signs which read: "Please do not shoot the buffalo from the train." July 1882 kicked off the beginning of a banner year for Durango and the Four Corners area. That was the year the area's mines produced \$20 million in gold and silver ore. The last tie had been laid and the last spike driven, flags were flying and bands playing, as the first train from Durango was on its way up to Silverton through the Las Animas Canyon, later to eventually carry most of the \$300 million in ore produced over the period of years to come.

On the heels of the gold and silver strikes and the narrow gauge railroad came the reform minded who vowed to clean up the drinking, brawling, and open vice that exploded as fast as the wealth which had come about from the get-rich-quick mines.

Today, Durango — where the "Journey into Yesterday" begins — is the center of one of the most famous areas ever restored.

Attractions from the time of early cliff dwellers in Mesa Verde National Park to the gold and silver strikes era in the 1800's thrill thousands of visitors each year. The famous Strater Hotel which after the mining boom dwindled and dozed for years is now straining at its seams reliving the fame and glory of those hardy pioneer days. Rooms in the back overlooking freight yards, formerly the hard ones to rent, now are in demand by visitors wishing to relive the past to sounds of whistles and steam hissing from engines.

The Diamond Belle Saloon, housed in the Strater Hotel, once again threw open its swinging doors. Waitresses in ostrich feathered scanties serve drinks while garter-sleeved musicians pound out the tunes of the gay '90's on honky-tonk pianos. Melodrama and vaudeville acts, Can-Can girls and the architecture all add up to a friendly visit to the days of yesterday.

Down the street at the railroad station visitors clamber aboard the last remaining narrow gauge passenger train in the United States, which puffs its way

(Continued on Page 11)



CLIFF PALACE, ONE OF THE MAJOR CLIFF DWELLINGS, located in Mesa Verde National Park near Durango, Colorado in the Four Corners area where Colorado, Utah, Arizona and New Mexico have common borders. Package vacations and transcontinental side trips into this history-packed area attract thousands of visitors annually from all part of the world.

4 Millionth Passenger



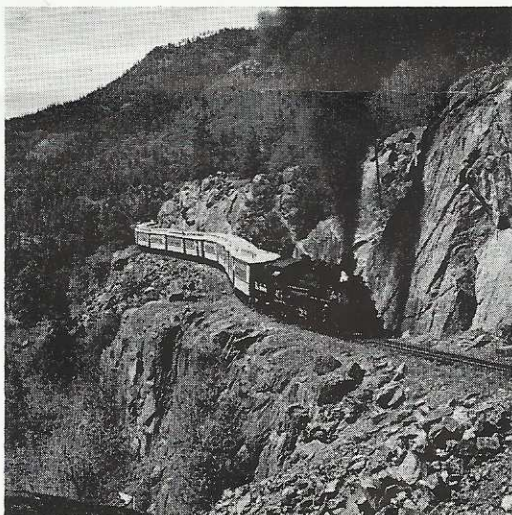
FRONTIER RECORDS FOUR MILLIONTH PASSENGER. Harold Hessing of Los Alamos, New Mexico is honored as Frontier Airlines' four millionth passenger beginning the carrier's one billionth passenger mile.

Mr. Hessing is presented with a membership plaque to the carrier's Frontiersman Club, among other awards, by Thomas H. Morphis, Regional Sales Manager for Frontier in Denver.

Nancy Davidson, stewardess for the airline lends a pretty assist in honoring Mr. Hessing with the airlines' milestone occasion. Frontier began operating in 1947. The airline's 11-state system totals 6,100 route miles throughout the Rocky Mountain West, Southwest and Midwest.

Profile . . . Four Corners Area

(Continued from Page 10)



LAST SCHEDULED NARROW GAUGE TRAIN in scheduled service huffs and puffs through the scenic Las Animas Canyon enroute from Durango to Silverton in the high San Juan country of southwest Colorado.

45 miles up a spectacular river canyon between Durango and Silverton high in the rugged San Juan Mountains. After sufficient time for something to eat, passengers answer the call "ALL ABOARD" and the Silverton Train again chugs its way back down the canyon to Durango.

Four Corners country in the Southwest is easily visited by those planning a full vacation in the heartland of the Rockies, or who would like to take a few days stopover on a transcontinental trip to the West Coast to enjoy a side trip into yesterday. Through the connecting cities of Denver, Albuquerque and Salt Lake City, Frontier Airlines serving the vacation needs of the Rocky Mountain West, connects with all transcontinental airlines.

SERVICE AWARDS



Earned in 1965 — May, June and July

15 YEAR SERVICE PINS

R. R. HILL, Station Agent, DRO
 H. G. VANDEBERG, Sales/Service Manager, SAF
 W. D. HECKMAN, Captain, DEN
 J. R. LANGHOFER, Captain, DEN
 D. E. WATSON, Sales/Service Manager, RAP
 B. E. LANGFIELD, Mechanic, DEN
 J. R. KLINGENSMITH, Dispatcher, DEN
 P. R. LAWSON, Sales/Service Manager, AIA
 R. W. PIER, Sales/Service Manager, ELP
 J. G. GRIFFITHS, Manager of Property and Leases, DEN
 J. F. TAGGART, Captain, BIL
 G. E. MILLER, Forman-Maintenance, DEN
 F. T. BLAKELEY, Captain, SLC
 K. E. HOUCHEMS, Sales/Service Manager, GUP
 C. K. FOSTER, Regional Manager of Stations, DEN
 O. L. BRUNZ, Sales/Service Manager, PUB
 L. W. LARSON, Captain, DEN
 J. A. WALKER, Captain, PHX
 W. E. CHAMBERS, Captain, DEN
 D. H. BURR, Administrative Assistant, DEN
 R. M. SCHOW, Captain, DEN
 M. E. LARSON, Manager of Revenue Accounting, DEN

10 YEAR SERVICE PINS

R. L. RIPPLE, Sr., Stock Clerk, DEN
 N. L. KEEN, Mechanic, DEN
 D. R. ANDERTON, Senior Agent, SLC
 R. L. ROBERTSON, Senior Agent, DEN
 C. J. SCHLENER, Assistant Manager DEN Station
 W. J. RUEHLE, Captain, DEN
 R. R. BLIESNER, Mechanic, DEN
 O. G. BOLLSCHWEILER, Station Agent, SLC
 T. ILLICH, Sales/Service Manager, LWT

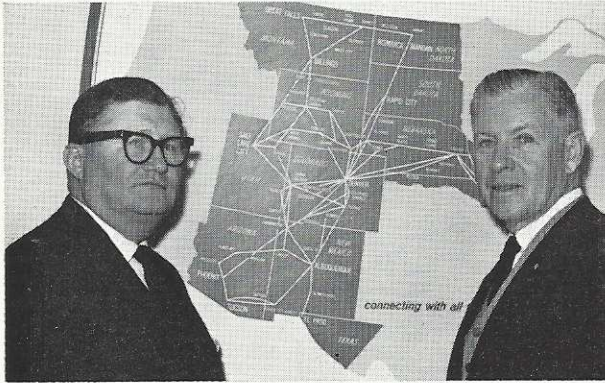
5 YEAR SERVICE PINS

S. L. RAMOS, Purchasing, DEN
 S. A. MILLER, Station Agent, BIL
 J. KLONIZOS, Station Agent, SLC
 J. J. LaQUEY, Station Agent, FMN
 J. N. HARTZER, Reservations, DEN
 M. AGENA, Station Agent, LNK
 S. G. COVINGTON, Station Agent, SLC
 V. J. ROBINSON, Stewardess, DEN
 M. VAN SISE, Stewardess, SLC
 M. E. HUNT, Station Agent, MTJ
 P. HUNTER, Mechanic, DEN
 E. C. MACEK, Station Agent, LNK
 V. W. ADDISON, Station Agent, POY



FIFTEEN YEARS OF SERVICE by Manager of Revenue Accounting, Marvin E. Larson is commemorated with a ruby studded pin presented by William M. Groody, Treasurer for Frontier.

Faces In The News — Flying Frontier



FLYING AND POLITICS came in for equal time when United States Senator from California, George Murphy (R) (right) got together with Frontier's Board of Director member Hoadley Dean meet at Rapid City.



"HERE'S BEANS IN YOUR EARS!" The popular Serendipity Singers check Frontier's offerings of vacation plans before flying to Laramie, Wyoming to perform for the University of Wyoming student body.



Actress Kim Novak and husband actor Richard Johnson flew Frontier to Grand Junction enroute to Aspen prior to their wedding.



Recording artist Neal Sedaka and wife Leba pause at Miles City, Montana enroute to the television show "Shindig" rehearsals.





Former Vice President Richard M. Nixon arrives in Phoenix from Tucson on a Convair 580 flight to speak at a testimonial dinner.

Sunliner News

Edited by the
PUBLICITY DEPARTMENT
Frontier Airlines, Inc.
5900 East 39th Avenue
Denver, Colorado

E. H. GERHARDT, Dir., Publicity
NEAL AMARINO, Mgr. News Bureau
SANDY IRTHUM

News material may be reproduced without permission.

FRONTIER AIRLINES
 5900 EAST 39TH AVENUE
 DENVER, COLORADO 80207