



# Sunliner News

VOL. 14—NOS. 1 AND 2

Published by Frontier Airlines

FEBRUARY-MARCH, 1965

## TRAFFIC AND EARNINGS HIT NEW HIGHS



PASSENGER BOARDINGS SOARED to a 635,452 total in 1964 with revenue passenger miles of 152,940,000—a gain of 22 per cent over 1963's record breaking total. New jet-powered aircraft, improved schedules and swelling vacation travel all contributed.



DENVER TRAFFIC was 21 percent of the total passengers carried by Frontier in 1964. Grand Junction, Rapid City and Colorado Springs were the top three destinations of these passengers boarding flights in Colorado's capital city.

### 1964 — BEST IN FRONTIER'S 18 YEARS

A 23 per cent gain in passenger revenues reflecting a 22 per cent increase in revenue passenger miles set the progressive pace of growth for Frontier Airlines in 1964. Immediate public acceptance of the jet-powered, 52-passenger Convair 580 aircraft, introduced throughout Frontier's system in the last seven months of the year, was a strong factor in building passenger traffic. In addition, a well received package tour program and the continuing success of the promotional fares in attracting new passengers solidly contributed to the overall excellent results obtained during the year.

#### Passenger Increases Best Previous Records

Revenue passenger miles totaling 187,082,000 exceeded by 22 per cent the 152,940,000 total of record setting 1963 which itself was a 51 per cent jump ahead of the previous year. During 1964 Frontier carried 635,452 passengers compared with 539,032 in 1963 for an 18 per cent gain.

#### Net Earnings Are Up

Operating revenues totaled \$22,226,645 in 1964 compared to \$20,126,942 of the previous year. Frontier's President, Lewis W. Dymond, pointed out, "These record breaking revenues were particularly heartening since a cut in Federal subsidy in July reduced Frontier's anticipated 1964 income by \$505,000." Operating profit for the past year was \$2,197,974 compared to \$2,025,501 in 1963. Net earnings came to \$890,329 up from \$801,962 reported in 1963. Earnings of 74 cents a share based on 1,203,160 shares outstand-

ing December 31, 1964, compared with 68 cents on 1,186,819 shares in the previous year.

#### Jet-Powered Convair 580 Has Great Appeal

An important factor in Frontier's growth in 1964 was the immediate public acceptance which followed the introduction of the jet-prop Convair 580. With its cruising speed of 355 miles per hour, smartly appointed interiors, comfortable, spacious seating and improved inflight services, the word soon got around that this was the best way to travel in the high country of the West. The first two CV 580s were introduced in June and passenger loads began to build quickly. By November the fourth 580 was criss-crossing Frontierland and average passenger loads per mile were up 27 per cent. As an example, in December the four jet planes flew only 306,218 miles against 401,579 miles operated with eight piston-powered Convair 340s which the 580s are replacing. Yet, the total passenger miles were approximately the same—7,122,000 compared with 7,305,000 flown with the Convair 340s.

#### \$16 Million Jet-Powered Program

Confident that the Convair 580 best suited the growing needs of Frontier Airlines for a fast, modern aircraft, the company undertook a \$16 million fleet modernization program in 1964. Every six weeks another jet-powered plane joins the fleet. By the spring of 1966 Frontier will be operating a fleet of 15 jet-powered aircraft throughout its system.

#### Package Vacations Attract Thousands

A full scale program to merchandise the tremendous natural scenic areas

served by Frontier included an all-out advertising, selling, publicity and promotional effort throughout 1964. Seven package vacations for three to five day stays in such internationally known holiday areas as Yellowstone, Grand Teton, Grand Canyon, Mesa Verde, Black Hills, Santa Fe/Taos and Juarez/El Paso included overnight hotel accommodations, ground transportation and tours. These were described in colorful informative folders, advertised in major metropolitan newspapers and magazines throughout the entire country, promoted by hard-hitting sales and publicity teams making personal contacts with news media and sales personnel in the travel trade, featured in a unique tabloid newspaper, the FRONTIER ENTERPRISE, and sold in quantity by the major travel agencies and airlines of the world.

Grand Canyon, Yellowstone and Grand Teton took 1st, 2nd and 3rd place honors for attracting the largest numbers of vacationists during the year with FAL tours.

Later in the fall of the year another series of package tours were organized and sold. This winter series were geared to the fabulous skiing to be found throughout the Rocky Mountain West and Southwest at such famed powder snow sites as Aspen, Crested Butte, Santa Fe/Taos and Sandia Peak and the fun-in-the-sun country of Phoenix and El Paso/Juarez. New tour folders, a winter edition of FRONTIER ENTERPRISE, newspaper and magazine advertising, personal selling and a flood of publicity have gotten the word out to winter vacationists that Frontierland offers the most to everyone on a year-round basis.

## PRESIDENT'S MESSAGE

The year 1964 saw many changes for Frontier Airlines. Business volume and earnings continued their excellent growth record. Notwithstanding our record-setting 51% increase in business during 1963, we again outpaced the industry average this year.

Over 635,000 passengers were carried, up nearly 100,000 from 1963. They flew 187,500,000 passenger miles, an increase of 22% over the previous year. Contributing to this were the Company's expanded sales promotion and the introduction last summer of the first of our new Jet-Powered 580s.

Commercial revenues increased \$2,564,000 or 22%, resulting in net earnings of \$890,329 — 11% above 1963. The increase in earnings was particularly heartening in view of the substantial reduction in government subsidy which resulted through a change in the class rate July 1, 1964. Had the 1963 rate continued throughout 1964, our revenues would have increased an additional \$505,000.

Frontier Airlines stock became listed on the American Stock Exchange April 14, 1964, and is now one of the only three of the country's thirteen local-service airlines to be listed on a major exchange.

During the year management was authorized to increase its order of the Jet-Powered Convair 580s and arrange additional bank financing. Orders now placed will bring the fleet total to fifteen by the Spring of 1966. One additional Convair 340 was purchased during the year, while DC-3s were gradually replaced.

Our past record of excellent employee-management relations was maintained with two new long-term agreements signed with our mechanics and pilots.

The close of the year brought about a change of ownership in the majority interest of Frontier stock. An agreement for sale by The Goldfield Corporation to RKO General, Inc., — a wholly-owned subsidiary of The General Tire and Rubber Company, of 651,308 shares or 54.1% of the stock was consummated by actual transfer of the ownership January 5, 1965. The owners of the majority interest openly endorsed present management and proclaimed the intent to continue unchanged the Company's past policy.

Frontier applied to the Civil Aeronautics Board for authority to operate a new major route Seattle-New Orleans, serving a number of cities enroute including Portland, Salt Lake City, Denver, Dallas and Houston and beyond Denver to Kansas City and St. Louis. Frontier is one of 13 applicants seeking this last remaining major route which does not presently enjoy a one-carrier service. We propose to operate the route without subsidy, using Boeing 727 jet aircraft. Furthermore, to offset subsidy in operating the balance of our system, we have proposed to return to the government all monies received from this route in excess of a reasonable rate of return.

Should the present general business trend continue, we anticipate another successful year in 1965.



LEWIS W. DYMOND  
Chairman of the Board and President

## Board of Directors Elect Dymond Chairman



PRESIDENT DYMOND addresses a joint dinner meeting of Tucson civic leaders and members of airline's Board of Directors.

Frontier Airlines' President, Lewis W. Dymond, was elected Chairman of the company's Board of Directors at their quarterly meeting of the Board held recently in Tucson. Mr. Dymond also continues to serve as chief executive officer of Frontier.

At the meeting three new directors were named to the Board. They include: Thomas F. O'Neil, Chairman of the Board of General Tire and Rubber Company of Akron, Ohio who is also Chairman of the Board of RKO General, Inc., of New York City. The two other directors were John B. Poor, President of RKO General, Inc. and Daniel A. Kimball, Chairman of the Board of Aerojet-General Corporation of El Monte, California.

Other Board members who continue to serve as Frontier Directors are: John P. Dahl of Santa Barbara, California; Hoadley Dean of Rapid City, South Dakota; Robert W. Goldwater of Phoenix, Arizona; Weston E. Hamilton of Salt Lake City, Utah; Edwin C. McDonald of New York City; Jerome Kohlberg, Jr. of New York City; and Preston Walker of Grand Junction, Colorado.

Following the Board of Directors meeting Mr. Dymond met with a dozen representatives of the newspapers, wire services, television and radio stations of Tucson. At this press conference he said that the new ownership of Frontier Airlines, RKO General, Inc., had given wholehearted approval to the company's multi-million dollar program for expanding its jet-powered Convair 580 fleet to 15 such aircraft by early 1966. Frontier will also aggressively pursue a concentrated program in the Pacific Northwest-Southwest Area Investigation for authority to operate an important air route between Seattle and New Orleans by way of Portland, Salt Lake City, Denver, Dallas and Houston and between St. Louis and Denver via Kansas City. Frontier proposes to operate the route with pure jet aircraft and without subsidy.



NEWS MEDIA representatives held a lively hour-long press conference with Mr. Dymond following the Board meeting in Tucson.

# Grand Canyon-Las Vegas Route Sought By Frontier



**CRITIQUE ON CASE** is held by Frontier's officials who handled the presentations for the airline in Las Vegas. (L. to R.) J. Clark Coe, Director of Economic Planning; Richard A. Fitzgerald, Vice President-Legal; William J. Mitchell, Vice President-Sales and Service and Lewis W. Dymond, President.

Need for direct access to Grand Canyon National Park and to Las Vegas, Nevada with a new air route was the theme of Frontier Airlines' presentations at Civil Aeronautics Board hearings conducted in mid-January in Las Vegas. Such a route would provide improved air transportation for needs of the growing West and would supply the first one-carrier air service to these famed vacation areas for Frontier-served cities in Arizona, New Mexico, Colorado and, via the Denver gateway, from Wyoming, the Dakotas, Nebraska and Missouri.

Civic witnesses from Denver, Durango, Farmington, Flagstaff and Tucson appeared in Frontier's behalf before Hearing Examiner Walter W. Bryan and Richard H. Bernstein of the Bureau of Economic Regulations. In addition, officials of Frontier Airlines, which included President Lewis W. Dymond; William J. Mitchell, Vice President—Sales-Service; and J. Clark Coe, Director of Economic Planning, appeared as witnesses to underscore the need for the service. Mr. Richard A. Fitzgerald, Vice President-Legal, handled the direct questioning and cross-examination of all witnesses.



**HEARING EXAMINER** Walter W. Bryan, (center) meets informally with Frontier's President Lewis W. Dymond and Bureau Counsel Richard H. Bernstein of the Bureau of Economic Regulations.

## Grand Canyon Vital to Success of Tour Program

With the building of a new Grand Canyon Park Airport at Tusayan, Arizona just a few miles from the main lodges and hotel on the Canyon's south rim, it was made imperative by the testimony given that Frontier be granted CAB authority to serve the new airport. Otherwise, the carrier's present successful tour program would be jeopardized. Mr. Mitchell pointed out that Frontier has been serving Grand Canyon National Park through Flagstaff since June 1950. "From that time," he said, "the airline's passengers on tours to this major, internationally-known, scenic attraction have grown in number to make it the foremost destination of vacationists taking a national park holiday on Frontier's system. The addition of Las Vegas as a top vacation attraction which could be visited via Frontier's flights would add immeasurably to the growth of the airline's passenger traffic."

## Route Would Be Operated Without Subsidy

Since the new route to Grand Canyon and Las Vegas would attract many additional travelers to Frontier's system, afford a new gateway to and from the West Coast, and show an operating profit to the airline, Mr. Dymond said in his remarks to the Hearing Examiner, "In view of the fact that we estimate a profit on the Grand Canyon-Las Vegas operation, Frontier requests that the Board grant Frontier's route extension from Flagstaff to Las Vegas via Grand Canyon on a non-subsidy basis by designating flights between Flagstaff-Grand Canyon, and Las Vegas as non-subsidy operations."



**FARMINGTON WITNESSES**, who made a solid case in Frontier's behalf in Las Vegas, gather with Frontier's President Dymond, (front and center). They are: (l. to r., front row) Mayor Floyd Davis and former New Mexico Governor Thomas Bolack. (2nd row—l. to r.) State Representative Austin E. Roberts; Troy Prater, President of Chamber of Commerce; James Vandiner, Town Board and C. O. "Ken" Kendrick, Industrial Development Committee.

# SKIING FRONTIERLAND

## Frontier Airlines Opens New Ticket Office In Aspen

Skiers at Aspen may now be ticketed directly by Frontier Airlines in the carrier's new city ticket office in the Colorado ski resort town. Located on Main Street in the Aspen Times Building next door to the Jerome Hotel, it is managed by Miss Penny Seymour-Scott, Sales Representative for the airline. Office hours are from 9 a.m. to 5 p.m. Thursday through Monday. The office is open all day on Saturday and Sunday to accommodate weekend visitors to the famed Colorado ski resort.

Opening of the city ticket office in Aspen follows closely on Frontier's recently advertised and promoted designation of Grand Junction, Colorado as the new gateway to Aspen. The airline has nine daily round trip flights through Grand Junction with connecting Hertz Rent-A-Car services from the Grand Junction airport terminal to Aspen. There are 4 daily round trip flights to and from Denver—three are flown with non-stop, jet-powered, 52-passenger Convair 580s and one with a Convair 340. Between Grand Junction and Salt Lake City there are 3 daily flights—two are flown with non-stop, 52-passenger Convair 580s and one with a Convair 340. Connections are made at both Denver and Salt Lake City to and from all sections of the U.S.A. In addition, Frontier schedules multiple daily round trip flights between Grand Junction and Albuquerque and additional service to and from El Paso, Texas and major Arizona cities.

Rental cars at Grand Junction are "Skierized". They are new cars equipped with ski racks and snow tires for the 130 mile drive between Aspen and Grand Junction.

In opening a sales office in Aspen on a year-around basis Frontier Airlines plans to promote a four-season vacationland program. Besides the excellent winter skiing which has made Aspen world-famous, Frontier is vitally interested in the ac-



**NEW TICKET OFFICE** in Aspen, managed by Miss Penny Seymour-Scott, promotes Frontier's fly/drive package to the famed ski resort served by the airline through Grand Junction.

claimed Aspen Music Festival and concerts, the art shows, the Aspen Institute for Humanistic Studies, the superb trout fishing and big game hunting which attracts visitors to Aspen year-round.

### Skiers Special Flight Provided By Frontier

New flights for skiers between Denver and the fast-growing Crested Butte Ski Area, served through Gunnison, Colorado by Frontier, are operating through this ski season.

Scheduled every weekend, Frontier's SKIERS SPECIAL leaves Denver Saturday morning arriving non-stop in Gunnison well before the lifts open. On Sunday the return flight leaves Gunnison late afternoon, allowing a full day on the slopes, arriving Denver non-stop.

This new skiers service, in addition to Frontier's regularly scheduled round trip service between these two cities, is designed to give skiers a full weekend of fun on the well-groomed slopes at Crested Butte. Upon arrival skiers will be met at the Gunnison airport with limousines provided by the lodges from Crested Butte.

Crested Butte, now in its best season ever, boasts more snow for skiing than any other area in the West. Its slopes provide 23 miles of trails from beginner to challenging expert runs. The

area facilities include a 7,500 foot Tele-car Gondola plus T-bar and J-bar. The vertical drop is 2,000 feet. Meals, lodging and complete ski sales and rentals are available.

### Ski The Nation's Top Areas Via Frontier Airlines

Skiing at the nation's top ski areas in the heart of Ski Country U.S.A. is being made available this season through appealing, low-cost, all inclusive winter vacation package plans by Frontier. Tripling the program budget over last year's, the airline has worked thousands of dollars into its '64-'65 ski season program to help make the fastest-growing winter sport more attractive to skiers.

For the skier who has a weekend or week to spend at his favorite ski area or areas the latest in lodge accommodations, meals and lift tickets along with unusually low air rates all available through Frontier Airlines are a must.

Frontier this year boasts service to three outstanding ski areas in the West and Southwest. Fast-growing Crested Butte located in the heart of the Rocky Mountains of Colorado is served daily by the airline plus a SKIERS SPECIAL FLIGHT operated on weekends. Direct connections can be conveniently made at Denver with all sections of the U.S.A.

Santa Fe, New Mexico high in the Sangre de Cristo Mountains offers everything a skier could wish. The area is served by two chairlifts and two pomalifts and offers a 1,716 foot vertical drop. Night life to suit all tastes is readily available in quaint Santa Fe.

Sandia Peak just a short distance from Albuquerque, New Mexico offers the finest of skiing under the clear blue New Mexico sky. Complete facilities are available plus many extras which are to be enjoyed in nearby Albuquerque.

Frontier Airlines will add three great new areas to its fast-growing list for the '65-'66 ski season. They are: JACKSON HOLE, STEAMBOAT SPRINGS and DURANGO.



**SNOWBUNNY** June Hendrickson, Frontier Airlines stewardess, demonstrates the smart, easy way to carry skis on a Frontier ski holiday. The ski bag accommodates all lengths of skis plus a pair of poles. The price of the ski bag is \$6.00 at any FAL ticket counter or \$6.50 mailed from Frontier Airlines Ski Department, 5900 East 39th Avenue, Denver, Colorado.



**FAST GROWING SKI CENTER** Crested Butte, in the heart of the snow-capped Rockies, is served daily by Frontier with an additional Skiers Special Flight on weekends. Here eager skiers arriving on the Skiers' Special prepare to gather their gear and head up the mountain for an unforgettable weekend of fun, sun and powder snow.

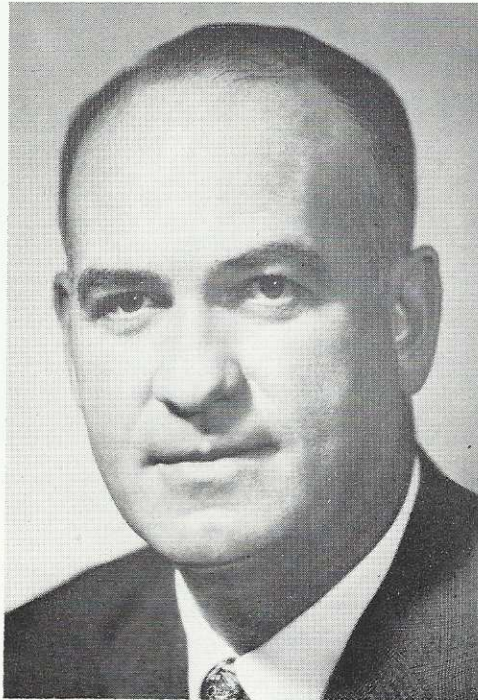
# New Directors Named to Frontier Board at Tucson Meeting

**THOMAS FRANCIS O'NEIL**, Chairman of the Board of RKO General, Inc., and Chairman of the Board of General Tire and Rubber Company, was born in Kansas City, Missouri. He graduated from Holy Cross and joined General Tire and Rubber Company. During World War II he served five years in the Coast Guard in the Pacific as the skipper of an LST.

Returning from the service he rejoined General Tire in Boston. There he entered the radio industry in 1947 as Vice President and Director of the Yankee Network. Later he became a member of the Mutual Network Board of Directors and was elected Chairman of the MBS Board in 1951 and President in 1952.

RKO General, Inc., a subsidiary of the General Tire and Rubber Company, also owns the following organizations: Yankee Network, Boston; WOR-AM and WOR-TV, New York; KHJ and KHJ-TV, Los Angeles; KFRC, San Francisco; WHBQ and WHBQ-TV, Memphis; and WGMS, Washington, D. C.

He is also a member of the Board of Directors of Mutual of Omaha,



THOMAS F. O'NEIL

The Advertising Council, Brand Names Foundation, and Lay Trustees of Fordham University.

**DAN ABLE KIMBALL** was a World War I Army air pilot whose continued interest in aviation led him to the chairmanship of Aerojet-General Corporation, one of the nation's leading rocket and space technology firms.

Following service Mr. Kimball joined General Tire and Rubber Company. In 1944 he became a Vice President of General Tire and Executive Vice President and General Manager of the Aerojet Engineering Corporation of Azusa, California. He played a key role in General Tire's acquisition of Aerojet as a subsidiary.

In 1949 Mr. Kimball resigned his executive posts to serve as an appointive Federal officer for nearly four years. He was Secretary of the Navy from July, 1951, through January, 1953, having previously been Assistant Secretary of the Navy for Air from February to May 1949 and Under Secretary of the Navy from May, 1949 to July, 1951.

Mr. Kimball is a Vice President and a Director of the General Tire & Rubber Company of Akron, Ohio, of which Aerojet-General is a corporate subsidiary. He is also President of Consumers Investment Fund and Chairman of the Bank of Sacramento.

**JOHN BARTON POOR**, who is President of RKO General, was born in Philadelphia, Pennsylvania. He graduated from Wesleyan University and received his law degree from Harvard Law School. He served in the Coast Guard during World War II as a Lieutenant.

Following service he joined the Boston law firm of Nutter, McClenen and Fish and resigned in September 1949 to form the Boston law firm of Dalton & Poor.

Mr. Poor had represented the Yankee Network in New England from 1947 and in 1952 moved to New York as Vice President and General Counsel. In 1953 he became a Vice President of Mutual Broadcasting System. He was named its President in 1956 and remained as such until its sale in 1957. During the period with Mutual he also continued his duties with Yankee and its successors. He became President of RKO General, Inc. in November, 1962.

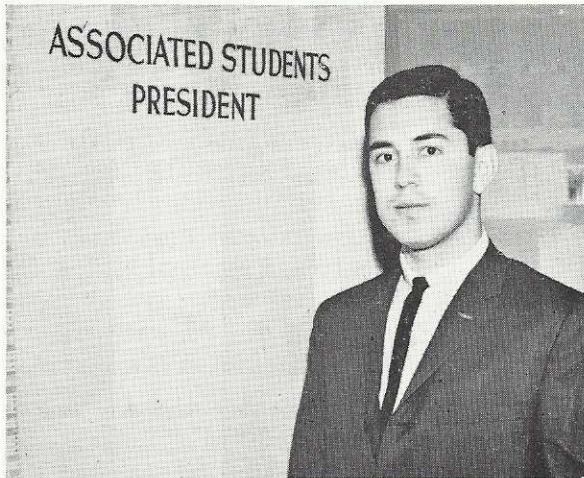


DAN A. KIMBALL



JOHN B. POOR

## Campus Reps Help College Students



**JOHN SALAZAR** is campus rep for Frontier at the University of New Mexico at Albuquerque. John is a senior majoring in Pre-Law. Besides being a top-notch salesman for FAL he is President of the Associated Students and active in other campus groups.

College students receive assistance on obtaining a 40 per cent reduction in air travel fare on Frontier Airlines as well as air travel information from Frontier's campus representatives.

Located on five main college campuses—Colorado College, Colorado State University, University of Nebraska, University of New Mexico and the University of Utah—the carrier's campus reps offer air travel assistance to student bodies totaling better than 44,000 students while promoting the fortunes of Frontier around the campus.

Especially important to students and of great value to the carrier, are the reps during the various holiday seasons. Providing flight information for Frontier and connecting carriers and selling Frontier "21 Fare" identification cards are the main part of the campus reps job.

More students each year under the age of 22 years are making good use of Frontier's "21 Fare". Only \$10 a year provides a student, who qualifies, with a "21 Fare" I.D. card. This entitles the holder to use Frontier Airlines to travel anywhere to 64 cities over an 11-state system at a 40 per cent savings.

Frontier's campus representatives are well know on campus. Aside from their airline duties they are active in campus politics, holding various offices, or carrying the name of their college on a sweat shirt in competitive sports.



**SUZANNE FORSHA** does a fine job of representing Frontier as campus representative at the University of Utah, Salt Lake City. In her junior year as a marketing and economics major, Sue makes good use of her art talents by designing and painting many of her own travel posters for use on the campus.

## Credit Union Records Banner Year



**TOP STRING PULLERS** at the annual Credit Union dinner meeting were: William J. Mitchell, Vice President—Sales and Service; Robert Knight, Credit Union Manager and Warren H. Schuling, Director of Maintenance and President of the Credit Union. Bikini was a door prize with the compliments of Trans World Airlines.

Assets totaling better than \$1,136,000 made 1964 the most progressive year in the history of Frontier Airlines' Federal Credit Union. This is a 37 per cent jump over the \$827,000 reported in 1963.

Two reasons given by Credit Union officials for the banner year in '64 are progressive leadership and management. Warren Schuling, president of the C. U.'s Board of Directors states "The programs developed during the year 1964 were well thought out, well proposed to the membership and well received."

To handle increased business the CU employed additional people in the Denver office. These increased personnel permitted the CU to provide service surpassing previous years.

Another stride was the opening of a branch office in the airlines' General Office. Additionally, CU management personally met with Frontier personnel working in cities outside of Denver.

New programs which proved successful in offering added benefits to members included the new Estate Loan Program, wholesale buying of automobiles, appliances and other merchandise, as well as sponsoring inter-line tours for FAL employees.

All areas of operation were checked and re-checked for greater efficiency at lower costs. Bringing these many important facets of operation together with a well informed employee group made 1964 the best year ever. This year's goal "ONE MILLION FIVE IN '65".

## Al Best Wins Award



**MEMBERSHIP AWARD** goes to H. Al Best, City Sales Manager for FAL in Albuquerque. Presentation was made by W. D. James of Southern Union Gas Company in behalf of the Albuquerque Chamber of Commerce for Al's unstinting efforts in the membership drive.

# Frontiersmen Earn Promotions



**DIRECTOR OF INDUSTRIAL RELATIONS AND PERSONNEL** is Gordon Linkon. Linkon is responsible for all activities in industrial relations, personnel and properties. During the past six years he was Personnel Relations Counsel for the Air Transport Association of America in Washington, D. C.



**THOMAS H. MORPHIS** — Regional Sales Manager in Denver. He was formerly Regional Sales Manager in Kansas City.



**HERBERT C. SCHMIDT** — Regional Sales Manager in Kansas City, Missouri. Formerly Schmidt was Regional Sales Manager in Billings.

**WILLIAM R. BATES** is new Assistant Denver Reservations Manager working with Guy L. Lewis, Denver Reservations Manager. Bates was a Senior Controller in reservations and payload.

**LESLIE D. BENDICKSON** is now Sales/Service Manager in Scottsbluff. He was Sales/Service Manager at Casper.

**PETER H. BLACK** has been named as the carrier's new City Sales Manager at Billings. He formerly was a Sales Representative in Salt Lake City.

**THOMAS J. BRUNGARDT** is a new Sales Representative in Denver. Previously he was a Denver Station Agent.

**ROYAL J. BURT** is the new Sales/Service Manager at Grand Junction. Previously he was Sales/Service Manager at Scottsbluff.

**DANIEL L. FOREMAN** is the new Sales/Service Manager in Williston. He previously was Sales/Service Manager at Jackson, Wyoming.

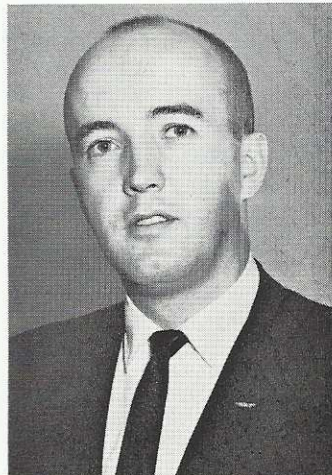
**ROY G. HILDERMAN** is the new Supervisor of Training-Sales/Service — working with David Burr, Administration Assistant. Hilderman was a Denver Station Agent.

**GEORGE F. LUTITO** is a Senior Accountant. Formerly he was a Property Accountant.

**JAMES J. SCHNEIDER** is the new Sales/Service Manager at Casper. He transferred from Williston where he was Sales/Service Manager.

**JAMES R. TURNQUIST** is now Maintenance Material Planner working with Art Davis, Superintendent of Stores. Turnquist formerly was a stock clerk.

**JOHN E. ZABRISKIE** is the carrier's new Sales Representative in Phoenix. He was formerly a Station Agent in Denver.



**DONALD E. GROVER**—Frontier's new Agency and Interline Sales Representative assisting Bill G. Rowley, Manager of Agency, Tours and Interline Sales. Previously Grover was a Sales Representative in Phoenix.



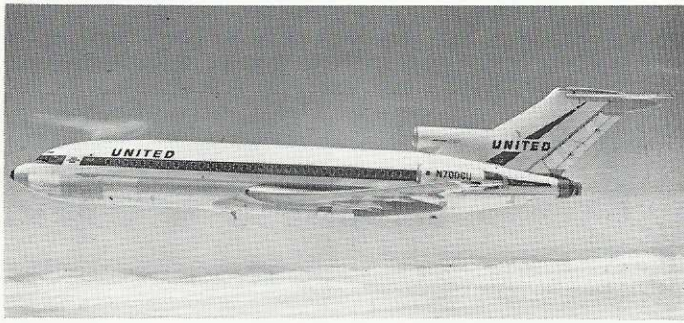
**VIRGIL L. ALVEY**—New Position of System Manager of Ground Station Equipment. Alvey was formerly a Regional Manager of Stations.

## Gold Watch Marks Retirement



A **TRIBUTE LUNCHEON** was given to Clyde L. Brunaugh as he retired from his duties with the Maintenance Department upon reaching his 65th birthday. Commemorating the event Clyde was presented with an engraved gold watch by President Lewis W. Dymond and Vice President of Operations and Maintenance M. Ed O'Neil.

## Passes and Reduced Rates Offered By United Air Lines



UNITED AIR LINES now provides Frontier Airlines employees the opportunity to use the carrier's 18,000 mile system for vacation and reduced rate travel. Sleek Boeing 727 aircraft are one means of getting from here to there with UAL.

Vacation passes and half-fare, positive space travel over the routes of United Air Lines are now available to Frontier Airlines employees.

United is offering one, round-trip, space-available pass annually to all full-time Frontier employees with one year seniority. The new policy also applies to the employee's spouse and dependent children under 21 years of age. A pass can be obtained to any of the over 100 United-served cities on the mainland of the United States with stopover privileges permitted enroute. Service charges are based on the number of United designated area zones included in the itinerary of the pass holder.

An unlimited number of half-fare trips can also be taken on United on a positive-space basis. This reduced fare applicable to all classes of service and fares can also be used by the spouse and dependent children of an employee with at least six months seniority. The reduced fare also applies to travel between the Pacific Coast and Hawaii.

All travel on United must be requested through Frontier Airlines' pass bureau in Denver. Service charges are paid directly to United Airlines when checking in at the ticket counter. Passes are valid for 60 days and on reduced fares for 90 days.

## Commuter Service ABQ-FMN



NEW COMMUTER SERVICE inaugurated between Albuquerque and Farmington was given full news coverage as Tom Bolack, former Governor of New Mexico, discusses the service with Al Best, Frontier's City Sales Manager at Albuquerque. A noon departure from Albuquerque and a mid-afternoon flight from Farmington make possible a new commuter service when combined with Frontier's two other daily round trip flights between the two cities.

## Wins TV in AA Contest



WINNER OF AMERICAN AIRLINES' CONTEST Mrs. Joan Messina, Frontier reservations agent in Phoenix is presented with a portable TV set by Robert L. Frederick, American's Phoenix Manager. Frontier's Director of Sales, Lawrence C. Sills included his congratulations to the winner in the "Astrovision Sweepstakes."

## Airlines Traffic Office Opens At Holloman AFB



AIRLINE REPRESENTATIVES at the opening of the Holloman Air Force Base Airline Ticket Office (JAMTO): (l to r) Elden Brown—CAL, Kaye Burgon—FAL, Ed Flake—EAL, Ralph Murphy—TTA, Jim Winhold—AA, James Cahoy—Frontier's representative and manager of the Holloman office. Colonel H. C. Godman, Base Commander cut the ceremonial ribbon.

A new Airline Traffic Office (formerly known as Joint Airline Military Ticket Office—JAMTO) is open at Holloman Air Force Base in Alamogordo, New Mexico.

The office, sponsored jointly by all scheduled airlines in the United States, is operated under the direction of the Air Transport Association and is managed by Frontier Airlines' representative, James Cahoy.

The advantages of the on-base airline office include the providing of quick reservations and ticketing service on all airlines for on-base personnel without the need of contacting an airport ticket office.

In addition to the Holloman office, Frontier Airlines has representatives at four other such offices, two others in New Mexico—Jack Bass at Sandia Base and Olin Kuehnert at White Sands; as well as two in Colorado—Darwin Kerr at Ent Base and Carl Henry at Lowry Base.



# Jet Service Inaugurated at Durango and Flagstaff



**JET SERVICE AT DURANGO** was officially inaugurated with the cutting of a ceremonial ribbon by (l to r) Vern Carlson—Assistant to the President for FAL, Lewis W. Dymond—President of Frontier, Mel Flock—Mayor of Durango, John Ferguson—Chairman of the LaPlata County Commissioners, John McNamara—Vice President of the Durango Chamber of Commerce and Thomas Morphis—FAL's Regional Sales Manager in Denver.

Another jet-powered Convair 580 aircraft has been added to Frontier Airlines' scheduled operations continuing the carrier's highly successful jet-prop program.

The total number of twin-engine, jet-powered Convairs in operation over the airlines 11-state system is five. The jet program was inaugurated in June 1964. Adding a new Convair every six weeks, management expects the carrier to be flying an all jet-prop Convair 580 fleet by spring 1966.

The latest Convair 580 added recently is flown on a route between Minot, North Dakota and Tucson, Arizona, with intermediate service for major cities. Frontier passengers using the new jet service cut travel time by hours because of the increased cruising speed to 355 miles per hour, 100 miles per hour faster than the piston powered Convair 340 it replaces. Additionally, thru-plane service is provided in many cases where connections were necessary before.

Frontier operates two, daily, jet-prop, round trip flights between North Dakota and Arizona. Receiving jet service for the first time as part of the North Dakota-Arizona schedule are

Durango, Colorado, jumping off point for Mesa Verde Park tours and Flagstaff, Arizona, gateway to the awesome Grand Canyon National Park.

Denver-based Frontier, the new CV-580 airline, offers two climate extremes. Travelers from North Dakota shivering with frigid temperatures as low as —40 degrees can, via Frontier's jet service, be enjoying fun-filled days in Phoenix or Tucson basking in sunny 70 and 80 degree temperatures after a short few hours of relaxing jet travel.

While aboard any Frontier jet-powered Convair 580, passengers enjoy the best in first class service. Snacks, on appropriate flights, with a wide selection of beverages and smooth, quiet flying with a background of true stereophonic music.



**AT FLAGSTAFF** officials of the city and Frontier exchange CV 580 pictures and commemorative plaques on the beginning of jet service. (l to r) Merrill Young—President of Chamber of Commerce, Mack Forrester—Manager of the Flagstaff Chamber, David Burr—FAL Administrative Assistant, Kerry Allen—FAL's Sales and Service Manager at FLG, Vern Carlson—Assistant to the President of FAL and Earl Barker—Owner of the Strater Hotel in Durango whose city also receives the new jet service.

# FAL Air Cargo Best In 18 Years



**AIR CARGO** is an important part of every Frontier flight. Agents Les Simpson and Charles Marquez, Denver, prepare to load a portion of the 13 million pounds air lifted by the carrier in 1964.

Air cargo shipments carried by Frontier in 1964 reached new record totals for the best showings in 18 years of operations.

Consisting of mail, freight and express, cargo totaled 13,196,000 pounds for a 20 per cent gain over the 10,970,000 pounds handled in 1963. Another way to evaluate these shipments were the 2,097,000 ton-miles flown last year compared with the 1,751,000 ton-miles total of 1963.

Breaking cargo down into its three categories had air freight totaling 8,723,000 pounds for a 25 per cent gain, air mail of 2,797,000 pounds showed a 12 per cent increase and air express shipments of 1,675,000 pounds represented a 10 per cent jump over 1963 totals.

Ken Stemler, Manager of Cargo and Military Sales said, "Increases in shipments made by freight and express were particularly noted in the forwarding of drugs, pet animals and equipment used in oil exploration during the year. There was also a definite swing to rely on receiving cargo by air on a regular basis instead of using this service for emergency needs."

# TIPS FOR TRIPS

By ANN YANULAVICH

Oh, that post-holiday letdown! The fantastic Las Vegas Christmas Party and all the other fun-filled holiday shindigs that kept us so busy the last month are all gone by the wayside for another year. Now is a perfect time to start planning a spring vacation. How about Sunny Spain and Portugal?



Trans World Airlines Photo

This Spanish workman pauses on the road to quench his thirst from a huge wine flask called a "porron". Local wine shops challenge tourists to a standing "on-the-house" offer to anyone who can drink the flask using only one hand.

Lisbon—a beautiful city built on seven hills with a Gulf Stream climate as balmy as Southern California. And, so many sights—Belem Tower, St. George Castle, Black Horse Square, the Cathedral and of course, nearby Sintra, a fantasy town of beautiful architecture full of swirled belfries and towers amid beautiful gardens of camelias and mimosa.

Seville, the leading city in Andalusia, the Southern section of Spain, is said to be the most Spanish city in Spain. Wandering through Santa Cruz (Seville's oldest section) with its beautiful palm trees and bubbling fountains, Alcazar Palace, the Patio of the Oranges and a visit to nearby Cordoba would be just what the doctor ordered for those doldrums most of us seem to be experiencing right now.



Paul Almqvist, Sales and Service Manager, FMN, his wife Bettie and Mrs. Marian Sims, wife of Captain George Sims, PHX, deplane from Aereas De Espana as they prepare to explore another city in Spain.

Granada—so full of Spanish history that a traveler will be certain he has slipped back into ancient Spain. What a great time we could have wandering through Alhambra Palace, the most celebrated of Moorish palaces.

Madrid, set in the dead center of the Iberian Peninsula and walled off from European rains by mountains, is said to enjoy more sunny days than almost any city in Europe. What an opportunity to sightsee to our heart's content in this beautiful climate and so many sights—the Plaza Mayor (Madrid's most antique quarter), Cibeles Square, Puerta del Sol and the Prado Museum to name but a few.

And, to think we could be shopping for all the wonderful things Spain is so noted for and at ridiculously low prices—gold and silver jewelry, leather goods, porrones (note the picture), lace mantillas, colorful pottery, etc., etc.

Back down to earth, you say? For some of us, "yes", but for thirty lucky Frontiersmen "no". On March 1, they will be leaving New York on TWA, with Bob Knight—DENXY as their tour conductor, bound for a "for real" trip to Sunny Spain and Portugal. TWA will again furnish positive space transportation from your connecting city. The one low cost of \$242.50 includes all ground transportation, hotels, most meals, all sightseeing, transfers and all tips and taxes with the exception of airport taxes.

Want more ideas? How about these? The Hotel Waikikian, right on the beach at Waikiki, Hawaii, has just noti-



Alhambra Palace, Granada, Spain—This beautiful palace rises over Granada like Athens' Parthenon on the Acropolis.

fied us that they are offering discounts to airline personnel ranging from 35% to 60% (depending on the type of accommodations required and the time of year). Contact their manager, Jim Knaefler, for reservations. Come vacation time, I think I may give this one a try myself.

BOAC has put together an 18-day tour of Hawaii and the Orient which sounds mighty interesting. Some of the special features of this one are a beautiful Hawaiian Luau Native Feast, a visit to Tokyo's famous Kabuki Theatre and a "Geisha Party". This tour, departing from San Francisco March 15, sells for \$544.50 and includes, hotels, most meals, transportation, sightseeing, transfers, etc.

Japan Air Lines has a new "Takara Bune" tour with departures from Los Angeles March 4, July 29, November 11, November 18 or November 25 at a cost of \$460. This 15-day tour takes you through the real heart of Japan and Hong Kong and includes a cruise on the beautiful Inland Sea of Japan.

# SERVICE AWARDS



Earned in 1965 January-February-March

## 15 YEAR SERVICE PINS

F. BRGOCH, Captain, BIL  
W. G. DRYDEN, Radio Mechanic, DEN  
E. V. RANDALL, Senior Clerk, DEN

## 10 YEAR SERVICE PINS

F. G. CASTROP, Sales/Service Manager, EAR  
L. G. HUGHEY, Sr. Station Agent, FMN  
P. D. MORRIS, Relief Dispatcher, DEN  
J. J. SCHULTE, Station Agent, OMA  
B. G. TUTTLE, Sales/Service Manager, ALM

## 5 YEAR SERVICE PINS

D. K. BABCOCK, Station Agent, GUP  
R. A. BORCHARD, Station Agent, SLC  
M. K. CALDWELL, Station Agent, BIL  
L. M. CLARK, Fueler, DEN  
J. E. CLINKINBEARD, Mechanic, DEN  
E. F. COOPER, Passenger Agent, DEN  
A. L. EASOM, Mechanic, DEN  
J. M. FOHN, Stewardess, DEN  
R. J. GANSKE, Station Agent, CPR  
R. E. GLASGOW, Station Agent, GJT  
C. D. HANEY, Fueler, DEN  
R. J. MABIE, Mechanic, DEN  
R. E. NELSON, Station Agent, ABQ  
J. J. OATS, Stewardess, DEN  
M. J. OMEARA, Stock Clerk, DEN  
J. R. PAYNE, Station Agent, FMN  
B. H. ROBERTS, Clerk, DEN  
R. F. SEIBERT, Station Agent, CEZ  
H. VACEK, Station Agent, HSI  
R. VROOMAN, Cleaner, DEN  
J. L. WILDS, Station Agent, ABQ  
C. W. WILSON, Station Agent, FMN  
C. L. WORTHAM, Station Agent, BIS

Lufthansa German Airlines has put together an "Alpine Carnival" tour for every skier from novice to expert. Fifteen days in Europe's greatest winter resorts—Kitzbuehel, Danos and Munich—and all for only \$299 including all the regular tour features.

Those stewardesses are really traveling these days. Lorrie Campbell and Marsha Brown have both recently taken trips to Nassau, Lydia Schiemann spent Christmas with her family in Germany and Jeanette Sciacca along with Ethel Cooper (DENOO) just returned from an extensive trip to Hong Kong and Tokyo.

If you've taken a trip recently and would like to pass on your hints to other traveling Frontiersmen or if we can be of help to you in planning where to go on your vacation, please let me know at DENSI.

# Profile . . . Gunnison / Crested Butte

Two hundred years ago in 1765, Don Juan Maria de Rivera, leading a group of Spanish explorers from Santa Fe, pioneered his way into the beautiful virgin country in what is now Gunnison, Colorado.

During the early 1800's many other adventurers followed Rivera's route into this totally remote and silent country. Trappers came from the Arkansas and Rio Grande valleys in search of beaver along the mighty Gunnison and swift Colorado rivers.

In spite of the many groups which had entered this new region, none had mapped or explored it as intensively as John Williams Gunnison. Gunnison is accredited with recording much of the wealth in the area as a captain in the United States Army commanding an expedition of army topographical engineers.

Captain Gunnison plotted this country by way of Cochetopa Pass, east of the present site of Gunnison on a mission to map a suitable railroad route from the Mississippi River to the Pacific Ocean. He never completed his mission. After exploring and mapping their way in Utah, he and his men were massacred by Indians. Control of the Gunnison Country was held by the Indians until 1868 when a treaty was arranged with the Utes.

The 1870's and '80's saw news of gold and silver strikes bound from the canyon walls to city after city. Miners and settlers flocked to the Gunnison area exploding the population from a few hundred to as much as 5,000 in a short time.

## THE NEW GUNNISON COUNTRY

A visit to the fabulous Gunnison Country via Frontier Airlines be it summer, winter or another time of the year unveils to the vacationer a multitude of places to go, unparalleled sights to see and exciting things to do.

The town of Gunnison which is the county seat and surrounding communities like the mining town, nearby Crested Butte, make up a population of approximately 6,000. Here is an area, free from the buzz of the big city, which goes out of its way to accommodate the visitor and makes him feel at home. Western State College, one of Colorado's fine four-year institutions takes in several blocks along the quiet streets near downtown Gunnison. At an elevation of 7,666 feet, Gunnison in the summer is comfortably cool and in the winter proudly displays its winter wonderland look glistening with white mountain snows.

Each year Gunnison increases its retail sales efforts. More and more new companies and residents move into the area adding to its overall success. The four industries which supply most of the job opportunities for residents in and around Gunnison are recreation, ranching, Western State College and mining.

Visitors to the Gunnison Country staying at the many fine guest ranches which are available take jeep trips into the heart of the Rockies and fish the excellent streams or lakes which abound. Hunting, one of the favorite sports of thousands of outdoorsmen from every state in the Union, is one of the many attractions offered by the Gunnison Country. Here, in the beautiful setting of the highest of Colorado's famous Rockies, the experienced hunter or the novice can be assured an ever-increasing supply of elk, mule deer and black bear. There is also picnicking, camping, horseback riding, boating, water-skiing and much more.



**GUNNISON'S AIRPORT** plays an important role in the growth of the area. Students from Western State College use Frontier's flights extensively in their travels. Skiers from everywhere fly to Gunnison, gateway to the powder snow of Crested Butte and the giant new Curecanti Dam Unit on the Gunnison River depends on air service for the movement of men and material.



**NATION'S FASTEST GONDOLA** at Crested Butte climbs to the heights above the old mining town to give one of the most breath taking scenic views to be found in colorful Colorado.

## YOU HAVE TO SKI IT TO BELIEVE IT . . .

. . . That's the word from the fast-growing Crested Butte Ski Area served by Frontier thru Gunnison. The Butte just 28 miles north from downtown Gunnison is serviced by a 7,500 ft. Gondola lift rising 2,000 feet above the valley floor as well as a T-Bar and J-Bar which serve runs both for beginners and experts. Lodge accommodations and night life are plentiful. Lodges and night spots dot the area just a few feet from the ski runs as well as making up the better part of the town of Crested Butte just a mile down the road.

In addition to Frontier's regularly-scheduled daily flights for Gunnison, the carrier operates a **SKIERS SPECIAL FLIGHT** which leaves Denver early Saturday morning permitting skiers to get in a full weekend of skiing, returning to Denver late Sunday afternoon. Frontier puts skiing at Crested Butte within easy reach of any major city in the United States in a day's time.

Gunnison is truly in the heart of the Rockies. Within a 50-mile radius of the city are more than one-third of the nation's mountain peaks over 14,000 feet in elevation. This is the top of the nation where the most in enjoyment can be had for the entire family.



**SKIERS FLY TO GUNNISON** using Frontier's daily, 44 passenger Convair flights from Denver where air connections are made from all sections of the U.S.A.

In addition to the known ranching and agricultural industry in the Gunnison Country, recreation, which already plays an important role in the area, will get a large scale boost upon completion of the new Curecanti Dam project.

This immense construction project includes plans for three damsites in the Gunnison Country—Blue Mesa, Morrow Point and Crystal Dams. Primary purpose of the unit is to develop water storage and hydro-electric power generating facilities along a 40-mile section of the Gunnison River.

The Blue Mesa Dam is the major feature of the Curecanti Unit. The dam will be a 342 foot earthfill structure. The reservoir storage of the Blue Mesa will consist of 940,800 acre-feet and a power plant which will have a 60,000 kilowatt capacity. This reservoir will be the largest body of water in the state of Colorado. Scheduled completion for this Blue Mesa dam and power plant is set for February, 1966.

# Faces In The News . . . Flying Frontier



COLORADO GOVERNOR John Love and Colorado State Representative Charles Conklin fly to Montrose, Colorado for political parley on the Western Slope.



UNITED STATES Senator from Nebraska, Carl T. Curtis makes connections in Denver for Los Angeles.



LEWIS W. DYMOND, president of Frontier Airlines and Axel Neilson, Assistant to United Air Lines' President team up for a sunny weekend in Arizona.



WILLIAM J. MITCHELL, Vice President of Sales and Service for Frontier discusses the carrier's new jet-prop features with John H. Magoon, President of Hawaiian Airlines; and Norm Eggers, Sales Manager with Allison Division of General Motors.





MEMBERS OF THE Oklahoma City "Sooners Ski Club" pause just long enough for this snap shot before boarding their Frontier ski charter for a fun weekend on the boards at Aspen, Colorado.

**Sunliner News**

*Edited by the*  
**PUBLICITY DEPARTMENT**  
*Frontier Airlines, Inc.*  
 5900 East 39th Avenue  
 Denver, Colorado

E. H. GERHARDT, Dir., Publicity  
 NEAL AMARINO, Mgr. News Bureau  
 SANDY WARE

News material may be reproduced  
 without permission.

**FRONTIER AIRLINES**  
 5900 EAST 39TH AVENUE  
 DENVER, COLORADO 80207

IVAN F NEWELL

31

BOX 982  
 ALDEN KANSAS

BULK RATE  
 U. S. POSTAGE  
**PAID**  
 DENVER, COLO.  
 Permit No. 98

RETURN REQUESTED