

FRONTIER NEWS





TO OUR CUSTOMERS:

During the past several months we have experienced a pleasing growth in our company and the number of passengers we have been privileged to transport.

Unfortunately, our service has at times declined below our desired standards. We know we have inconvenienced many because of our inability to promptly answer our reservations telephones or to depart and arrive on time. We accept the full responsibility for these inconveniences and we only hope you have not experienced this less-than-normal service.

We are deeply appreciative of the continuing support you and all of our customers have given us and we humbly ask you to accept our apologies for any inconveniences we may have caused you during this recent period.

We are taking every possible step to correct these deficiencies and we hope we will have the opportunity many times in the future to prove to you that we can provide the type of service you expect and rightfully deserve.

Sincerely,

A handwritten signature in dark ink, appearing to read "Lewis W. Dymond". The signature is fluid and cursive, with a large, sweeping "L" and "D".

Lewis W. Dymond

President and Chairman of the Board

Over Two Million Passengers Set Traffic Record In 1967



FRONTIER'S FIRST BOEING 727 stretched model moves toward final assembly at Boeing's Renton, Washington plant. Frontier has on order five of the 141-passenger jet aircraft.

FAA Certifies B-727 Stretched Jet

The Boeing 727-200 aircraft, five of which have been ordered by Frontier, has been certified for airline service by the U.S. Federal Aviation Administration. This aircraft is the "long-bodied" version of the familiar tri-jet 727 now flown by Frontier.

A report from Boeing stated, "This was an exceptionally clean airplane with absolutely no significant mechanical problems during the entire flight test program."

Frontier expects delivery of two of the 727-200's in mid-February with the third "long-bodied" tri-jet being delivered in mid-March. Two more will be received by the carrier in mid-1968.

In addition to the five "long-bodied" 727 order, Frontier has also purchased five Boeing 737-200 twin-jet aircraft with an option for five more. Delivery of these aircraft is expected in early 1969.

Route Proceedings Reviewed

This review of current route proceedings is a special report from Frontier's Legal Department, headed by Richard A. Fitzgerald, Senior Vice President-General Counsel.

Denver-Las Vegas Route Case — The Examiner's decision recommending the award to Frontier is now before the Civil Aeronautics Board on Petitions for Review. Final decision should be made within one to three months. Frontier has requested authority to operate the route immediately in the event the Board denies the Petitions for Review.

Chicago Entry Case — (extension of Route 81 from Topeka, Manhattan and Salina to Chicago and St. Louis). The Examiner's decision recommending the award to Frontier is before the Civil Aeronautics Board on Petition for Review. Final decision should be made within one to three months.

(Continued on Page 4)

New passenger travel records were established on Frontier in 1967 when 2,032,466 passengers flew a record 610,200,000 revenue passenger miles. Passenger miles reflected a 36% increase and the passengers were a 29% increase over 1966 results.

For the first time, more than two million passengers used Frontier's service in a year. This compared with the 1,571,388 passengers using the carrier in 1966. The revenue passenger mile total compared with 449,194,000 in 1966.

In October of 1967, Frontier merged the routes of Central Airlines into its system. The traffic results reflect the combined travel

for the entire year.

During 1967, FAL added to its pure jet fleet. It now operates five 99-passenger Boeing 727 aircraft. The airline was also awarded the important Denver-St. Louis route in June of 1967. The carrier operates nine flights between the two cities. Two of the flights are non-stop; the remainder provide intermediate service for Lincoln and Kansas City.

Financial World Awards First Place To FAL Annual Report

Frontier Airlines was selected to receive a first-place award for having issued the best stockholder annual report of the airline industry in the 27th Annual Report Survey sponsored by Financial World, the nation's oldest business and financial weekly. The bronze Oscar-of-Industry trophy symbolic of this achievement was presented to William M. Goody, Vice President-Treasurer of Frontier.

Presentation of the coveted Oscar trophy was made by Richard J. Anderson, Editor and Publisher of the 65-year-old Financial World Magazine, before an audience of more than 1,200 business, industrial and financial leaders from throughout the United States and Canada.

Approximately 5,000 annual reports were reviewed in 95 classifications this year in the annual event to promote the improvement of shareowner financial statements.

Dr. Joseph H. Taggart, Executive Dean of the Schools of Business, New York University, is Chairman of the Awards Jury which made the selections. Other members are J. Carroll Bateman, President of the Public Relations Society of America; George Tscherny, President of the American Institute of Graphic Arts; Robert E. Sheridan, President of the New York Financial Writers Association; and David Zack, past President of the New York State Society of Certified Public Accountants. In addition, 39 security analysts from the nation's leading investment brokers and other financial institutions served on the panel.

(Continued on Page 4)

ROUTE PROCEEDINGS REVIEWED

(Continued from Page 3)

Reopened Pacific Northwest-Southwest Case — (Seattle and Portland to Texas, New Orleans and Kansas City/St. Louis via Salt Lake City, Denver and other intermediate points). A hearing was held in October; Frontier has submitted its brief, and the case is now in the hands of Civil Aeronautics Board examiner, with the final decision expected in late 1968. The Bureau of Operating Rights has recommended that Frontier be awarded a Salt Lake City-Denver-Dallas route.

Route 81 Case — This case involves improvement of authority in various markets and extension beyond Little Rock to Memphis, beyond Oklahoma City to Wichita Falls and Midland; beyond Amarillo to Dallas. It is now before the Civil Aeronautics Board examiner and the decision is expected in latter half of 1968.

Salt Lake City-Las Vegas-Southern California Case — Frontier is seeking to provide service between Salt Lake City, Las Vegas, Los Angeles and San Diego in this case. A hearing was held in July; Frontier has submitted its brief, and the matter is now before a CAB examiner. The Examiner's decision is expected within the next few months.

Gulf States - Midwest Service — (Detroit and Chicago to Texas and New Orleans via Kansas City and St. Louis, Memphis and other intermediates). A hearing was held in November and briefs to the CAB Examiner are due January 25 with the final decision expected in late 1968.

Salt Lake City-Denver Nonstop Authority — This application requests exemption authority to operate non-stop services between Salt Lake City and Denver on flights serving Kansas City or St. Louis. There is no estimate as to the time of decision.

Denver-Phoenix Nonstop Proposal — This proposal for exemption authority is pending before the CAB. There is no estimate as to decision date.

Denver-Oklahoma-Atlanta-Miami Application — Frontier has asked the Board to issue a "show cause order" which would propose the award of this route to Frontier without a formal hearing. The request is before the Civil Aeronautics Board for decision.

Service to Albuquerque Case — Frontier is applicant for service from Albuquerque to Dallas/Ft. Worth, Chicago, Las Vegas, Los Angeles and San Francisco/Oakland.

Southern Tier Nonstop Case — This case involves service across the continent. The markets in issue include Dallas/Ft. Worth to New Orleans, Atlanta, Tampa/St. Petersburg and Miami and from Dallas/Ft. Worth to the major California cities.

Dallas-Phoenix Nonstop Case — This involves nonstop service from Phoenix to Dallas and points beyond.

Denver/Great Falls-Calgary Service — Frontier is an applicant to provide nonstop service between Denver, Great Falls and Calgary.

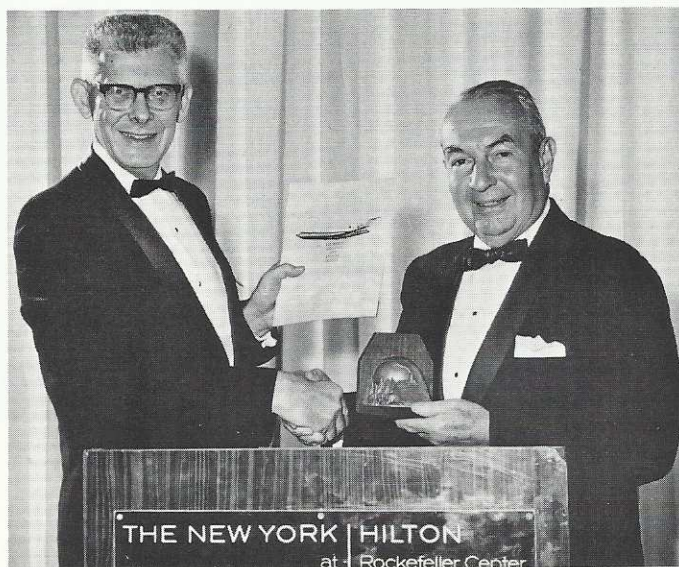
ABOUT THE COVER

This issue's cover photo was taken at one of the many popular ski areas located in Colorado. Planning on skiing the Rockies? Plan on flying Frontier there. FAL serves more than 30 great ski areas throughout the West and Southwest.



Financial World Awards First Place to FAL Annual Report

(Continued from Page 3)



WILLIAM M. GROODY, Vice President-Treasurer, FAL receives the first place award for the carrier's 1966 Annual Report from Richard J. Anderson, Editor and Publisher of Financial World Magazine.

The following cases are scheduled for hearing before the CAB Examiners in the early part of 1968:

Denver-Twin Cities Nonstop Service.

Service to Omaha Case — This case involves non-stop authority to Omaha from Denver, Kansas City, St. Louis, Chicago, the Twin Cities, and Seattle/Portland. Frontier is an applicant for all segments.

Other pending applications which have not yet been set for prehearing conference are:

Bismarck/Minot-Winnipeg service

Omaha-Des Moines Transcontinental Service

Service to White Plains, New York (Westchester)

— Frontier has requested service to White Plains from St. Louis and from Chicago.

The Company has decided to defer prosecution of its application for service from Albuquerque to points on the west coast of Mexico pending further investigation of the economic potential for such a service.

Frontier Airlines' Air Freight Up 44%

Air freight flown on Frontier during November increased 44% with 2,300,000 pounds. This compares with 1,650,000 pounds of air freight flown in the cargo pits of Frontier flights during the same month in 1966.

A. Kenneth Stemler, Manager of Cargo and Military Sales, reported that this increase came about in part due to a substantial cargo airlift boost with Frontier's new "Nighthawk" service.

Furthering the Post Office Department's nationwide program for overnight delivery of mail, Frontier began operating new night flights in order to carry the mail. To do this, a portion of the upper deck (forward cabin area) of the carrier's Boeing 727 aircraft is converted into a cargo hold. The coach section of these "Nighthawk" flights accommodates passengers at special economy fares.

THREE NAMED TO VP POSTS

Three new executive positions have been announced within Frontier by Lewis W. Dymond, President and Chairman of the Board.

Vern A. Carlson, formerly Assistant to the President and a 21-year veteran with the airline, has been named Vice President-Public Affairs.

John Clark Coe, formerly Director-Economic Planning, who has also worked with the carrier since its inception 21 years ago, is now Staff Vice President - Economic Planning.

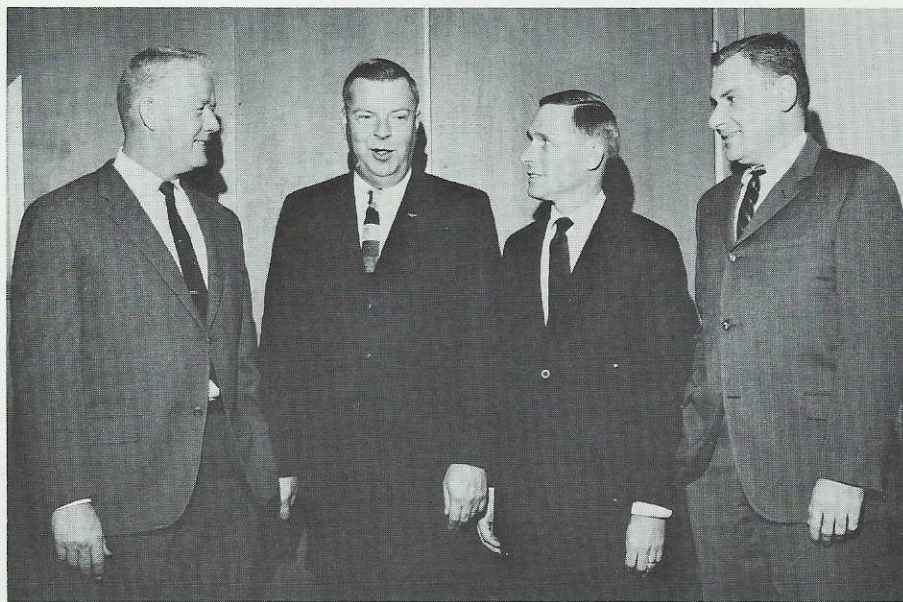
Gordon Linkon, former Associate General Counsel and Assistant Secretary, has been named Staff Vice President-Legal and Assistant Secretary.

During the past five and one half years, Mr. Carlson worked as Assistant to President Dymond. He began his career with Frontier in 1946 when he worked in customer services for Monarch Air Lines, a predecessor company to present-day Frontier Airlines. He was also the first flight steward for Frontier, having flown the first Frontier Airlines flight in November, 1947 between Denver and Durango, Colorado. Later, Carlson was named to the sales staff as a District Sales Manager. Prior to his appointment as Assistant to the President, he worked as Executive Assistant for Frontier in the airline's legal and public affairs department.

Mr. Coe has been Director of Economic Planning for Frontier since 1952. He joined the airline in 1947 in the Customer Services Department with Monarch Air Lines. In 1948, he became a Cost Accountant for the carrier. Later in 1951, Mr. Coe was named as Economic Research Analyst. He worked in this position for one year prior to his assignment as Director of Economic Planning.

During the past one year, Mr. Linkon worked as Associate General Counsel and Assistant Secretary for Frontier. He joined the carrier in 1965 as Director of Industrial Relations and Personnel.

Prior to joining Frontier, Linkon was associated with the Air Transport Association of America, Washington, D.C., where he worked as Personnel Relations Counsel.



PRESIDENT L. W. DYMOND (left) congratulates his new vice presidents, Vern A. Carlson, Vice President-Public Affairs; John Clark Coe, Staff Vice President-Economic Planning and Gordon Linkon, Staff Vice President-Legal and Assistant Secretary.

SALES REGIONS REALIGNED FOR RSM's

On January 1, 1968, the following realignment of sales responsibilities become effective according to Lawrence C. Sills, Director of Sales.

REGION 1

CHARLES L. DEMONEY, Regional Sales Manager.

Colorado — Alamosa, Colorado Springs, Denver, Durango, Grand Junction, Gunnison, Hayden, Lamar, Montrose, Pueblo.

Kansas — Goodland.

Nebraska — Alliance, Chadron, Scottsbluff, Sidney.

North Dakota — Bismarck, Minot, Williston.

South Dakota — Rapid City.

Wyoming — Casper, Cheyenne, Laramie.

REGION 2

HERBERT C. SCHMIDT, Regional Sales Manager.

Kansas — Dodge City, Garden City, Great Bend, Hays, Hutchinson, Manhattan, Parsons, Salina, Topeka, Wichita.

Missouri — Joplin, Kansas City, St. Joseph.

Nebraska — Columbus, Grand Island, Hastings, Kearney, Lincoln, McCook, North Platte, Omaha.

REGION 3

KAYE BURGON, Regional Sales Manager.

Montana — Billings, Bozeman, Glasgow, Glendive, Great Falls, Havre, Lewistown, Miles City, Missoula, Sidney, West Yellowstone, Wolf Point.

Nevada — Las Vegas (Upon route award)

Utah — Moab, Salt Lake City, Vernal.

Wyoming — Cody, Jackson, Riverton, Rock Springs, Worland.

REGION 4

T. R. BOYLE, Regional Sales Manager.
Arizona — Flagstaff, Phoenix, Tucson, Winslow.

California — Interim Coverage.

Colorado — Cortez.

New Mexico — Alamogordo, Albuquerque, Farmington, Gallup, Santa Fe, Silver City.

Texas — El Paso.

REGION 5

K. W. GANN, Regional Sales Manager.

Oklahoma — Duncan, Lawton/Ft. Sill, McAlester, Muskogee, Tulsa.

Texas — Dallas, Ft. Worth, Paris.

REGION 6

ARTHUR A. GIFFIN, Regional Sales Manager.

Arkansas — Fayetteville, Harrison.

Missouri — Ft. Leonard Wood, St. Louis.

REGION 7

V. R. WESTBROOK, Regional Sales Manager.

Kansas — Liberal.

Oklahoma — Bartlesville, Enid, Guymon, Oklahoma City, Ponca City, Stillwater.

Texas — Amarillo, Borger.

REGION 8

DAVID NAPPER, Regional Sales Manager.

Arkansas — Ft. Smith, Hot Springs, Little Rock.

TRANSFERS WITHIN FAL

KERRY ALLEN is now Sales/Service Manager at Cheyenne. He transfers from Kansas City. He joined Frontier in 1954 as a Station Agent.

OLIVER BRUNZ moves to Billings as Sales/Service Manager. During the past year and a half, Ollie worked as Sales/Service Manager in Cheyenne. He joined Frontier in 1950 as a Station Agent in Grand Junction.

DOYLE JOHNSON becomes Sales/Service Manager in Oklahoma City. During the past seven months, he worked as Sales/Service Manager in St. Louis. He joined Frontier in 1954 as a Station Agent in Denver.

HAROLD MAXWELL, formerly Sales/Service Manager in Oklahoma City, transfers to Kansas City. During the past 2½ years, he worked as Sales/Service Manager under the former Central. He began his career with the airline as a Station Agent at Ft. Smith, Arkansas in 1956.

NORMAN RANKIN has been appointed Senior Station Agent at Denver. Previously, Norm was Co-ordinator at the Denver station.

GEORGE SLIVKA has been named Sales/Service Manager in St. Louis. He had, during the past year, worked as District Operations Manager in that city. He began as a Station Agent with Frontier in 1948.

GARY SUBOTER has been named as the new City Sales Manager in Albuquerque. In addition to Albuquerque, Suboter will supervise Frontier's sales in Santa Fe and Gallup. During the past nine months he worked as a sales representative in Dallas/Ft. Worth.

RICHARD WITHROW is now a Senior Station Agent at Lawton. He began with Frontier in 1959 in Casper. He later transferred to Tucson, where he has been working up to this time.

DEPARTMENTS REASSIGNED

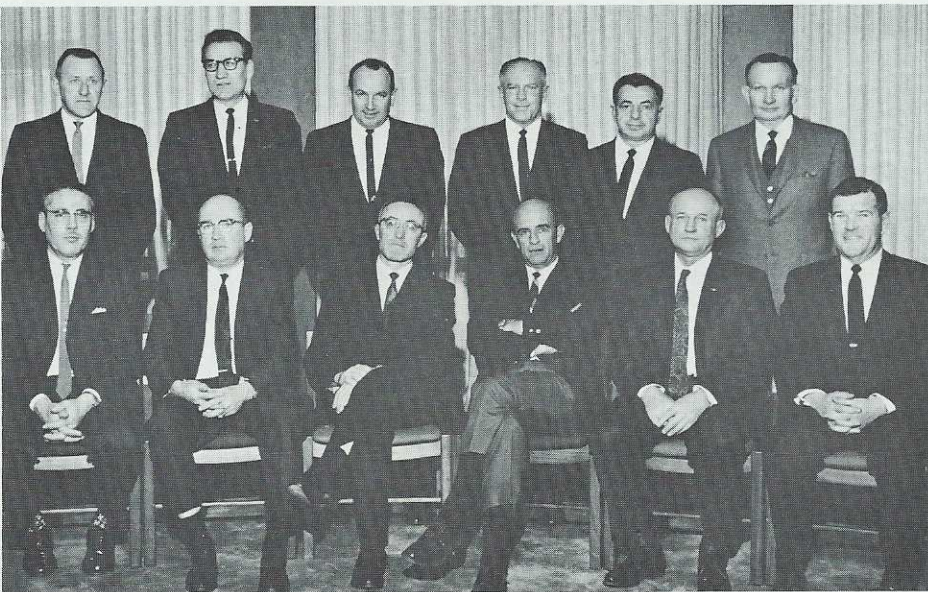
Mr. Dymond has announced a change in departmental assignment within the executive staff.

The Properties Department, headed by John G. Griffiths as Director, will now be responsible to the Vice President-Administration, George A. Smith.

Industrial Relations Department, headed by Evan Lingle as Director, and the Personnel Department, headed by Gordon Shaffer as Manager, will also be responsible to the Vice President-Administration.

The Tariff Department, headed by Claire Almquist as Manager, will be responsible to the Vice President of Sales and Service, Paul L. Benscoter.

TWELVE RECEIVE TWENTY-YEAR PINS



TWELVE FRONTIERSMEN join together for a special tribute giving honor to their twenty years of service to FAL. Receiving their emerald-studded twenty-year pins are (left to right, seated): John Randall, DENMM; John Brennan, DENML; Harry Ruppel, DENMQ; Captain Charlie Weed, DENDD; Captain Fred Hart, DENDD; and Captain Ken Dealy, DENDD. Standing, left to right, are: Earl Fischer, DENMQ; Bryce Garner, DENME; Captain Willie Hurt, DENDD; Captain M. A. Ferguson, SLCCD; Captain Sam Grande, DENDD; and Captain Bob Lambourne, DENDD.

SERVICE AWARDS



20 YEAR SERVICE PINS—JANUARY

Eakle, R. W., Foreman, DEN

15 YEAR SERVICE PINS—DECEMBER

Henderson, C. V., Sls. Svc. Mgr., RIW

10 YEAR SERVICE PINS—DECEMBER

Pennington, H. E., Jamto Rep., ALM
Rottinghaus, F., Sr. Stn. Agt., MKC
Snider, J. M., Sr. Stn. Agt., CYS
Talley, J., Res. Agt., DEN

10 YEAR SERVICE PINS—JANUARY

Osborn, D. H., Stn. Agt., JLN
Sledge, J. D., Stn. Agt., HOT

5 YEAR SERVICE PINS—DECEMBER

Hays, N. A., Res. Agt., DEN
Brown, B. J., Stew., DEN
Lilly, C. S., Stew., DEN

5 YEAR SERVICE PINS—JANUARY

Marquez, J. A., Res. Agt., DEN
McMahon, R. A., Mech., DEN
Mallow, S. J., Sec., GSW
Scoggins, B. K., Sr. Clrk., GSW

BEAUMONT NAMED MANAGER

—TOUR DEVELOPMENT

Ronald R. Beaumont has been appointed Manager - Tour Development. Ron comes to Frontier from Yellowstone National Park where he was employed since 1961 with the Yellowstone Park Company as General Traffic Manager and Assistant to the President. He was previously affiliated with Western Greyhound Lines and Glacier Park Company.

In his new position, Ron will be responsible for the development of personal and pleasure travel in addition to group and tour development.



RONALD BEAUMONT

GREENEMEIR DESIGNATED A&P LICENSE EXAMINER

To make it more convenient for FL mechanics to obtain their A&P Licenses, Conrad (Dutch) Greene-meir was designated as a representative of the Federal Aviation Administrator. In this capacity, Dutch has the responsibility of examiner for aircraft and/or power plant mechanics-to-be.

It would be difficult to find anyone better qualified than Dutch for this important function. A long back-ground in aircraft maintenance had its beginning in 1928 with Atlantic Aircraft, founded by Anthony Fok-ker. It is quite a distinction to have been associated with the grand old pioneer of aviation, and it no doubt contributed greatly to Dutch's devotion to a lifetime in aircraft maintenance. Dutch began his career with Frontier in 1946, when he joined Monarch Air Lines, forerunner of Frontier. Dutch is Denver-based and is now working as an Instrument Technician.

STEWARDESS LUSTER REIGNS AS MISS TRANSPORTATION-KANSAS CITY



LETHA LUSTER
Miss Transportation
Kansas City

Meet Miss Transportation for the Kansas City area. Letha Luster, who has been flying for Central for the past seven years, won out over 35 other contestants. Letha, who is formerly from Tulia, Texas was chosen Miss Transportation by some 22 traffic and transportation clubs throughout the greater Kansas City area.

MAINTENANCE ROUND-UP

by ART KRIEGER



JOE MUELLER (left) FAA; **Bill Durlin**, Frontier's Director of Quality Control and **Les Layton**, FAA representative who made the presentation, look on as **Dutch** proudly displays his Examiner's Certificate.

IN MEMORIAM

On Thursday, December 21, 1967, two Frontier crew members, Captain Farris A. "Rocky" Crane, age 34 and First Officer Ricardo "Rick" Cochran, age 35, were fatally injured when their DC-3 cargo plane crashed upon take-off from Denver's Stapleton International Airport.

Captain Crane, Denver-based, was promoted to Captain in July of 1967, having joined Frontier Airlines May 16, 1959. A resident of 2341 Iola Street, Aurora, Colorado, he was born on July 7, 1933 in Sulphur, Oklahoma. He attended Oklahoma State University and served in the Army from 1953 to 1955. He is survived within his immediate family by his wife, Billie Karen, and two sons; James, 14 and William, 13.

First Officer Cochran of 3182 Troy Street, Aurora, joined Frontier March 24, 1966. He was born June 28, 1934 in Champaign, Illinois. He attended the University of Colorado. He is survived within his immediate family by his wife, Marily; a son, Steven 14, and a daughter, Sherrie, 11.

Each of us extend to the families of these two fine individuals our deepest sympathies during this time of great loss.

Frontier Ad Account Awarded Tracy-Locke

Effective January 1, 1968, the advertising firm of Tracy-Locke Company, Inc. with headquarters in Dallas, officially took over the Frontier Airlines advertising account.

The ad firm's Denver office will be under the management of Marshall Bateman, who has been assigned Account Executive for the agency to Frontier.

EASTERN AIRLINES OFFERS LIBERAL PLAN TO FAL EMPLOYEES

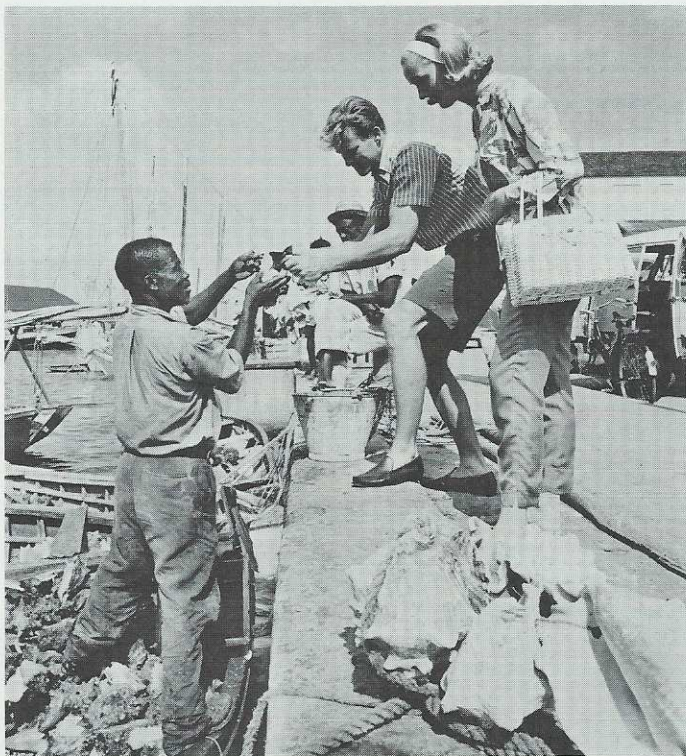
Down in sun country they say that Eastern Airlines washes its aircraft in sun tan oil. Which just goes to show that Eastern flies to some of the most beautiful and exciting vacation destinations in the world.

And when Eastern says "We Want Everyone To Fly" the invitation stands for all Frontier employees, with whom Eastern has an interline pass agreement.

Tracing its heritage back to Pitcairn Aviation back in 1927, and with a passenger boarding of more than 12½ million people last year, Eastern is well on its way to fulfilling its "We Want Everyone To Fly" advertising goal.

And it's little wonder! For among the 113 cities it serves are the dream spots of most everyone's ideal vacation. And in the remaining cities are the people who are doing the dreaming. Eastern acts as the binding link to bring the two together.

With the cities of New York, Montreal, Washington, and Boston at one end of its route — which themselves are vacation destinations for many people — the



NATIVE FISHERMAN at dock in Nassau displays conch to visiting tourists. This shell fish pronounced "conk" is an important part of the Bahamian diet and a delicacy admired by tourists who fly there by way of EAL.

FROM THE EDITOR

With this edition of the **FRONTIER NEWS**, we introduce the "Frontiersman." This section is devoted to information by and for employees of Frontier Airlines.

If you wish to be a field correspondent for the "Frontiersman," keep an eye peeled for interesting happenings about FL employees in your area. Forward them to **DENSP** with quality black and white photos (good Polaroids acceptable). Type or print clearly the who, what, when, where and why.

other end of the route structure is balanced with places like The Bahamas, Puerto Rico, and the beautiful island of Bermuda.

Here's a look at just a few of Eastern's prime vacation destinations.

THE BAHAMAS

A colony of beautiful islands balancing on the edge of the warm Gulf Stream offers everything from gay, exciting nightlife to miles of deserted beaches that look much the same as when Columbus first reached them. There is the famed capital of Nassau, with a decided British beat. And there is the newly developed self-contained vacation meccas of Freeport and West End on Grand Bahama Island.

Nassau gives you white-wigged judges, fine British architecture, and the manners and customs of "the Colonies," along with native straw markets and an easygoing Bahamian style. Grand Bahama Island offers irresistible glittering new hotels and casinos, golf courses set in green pine forests and a world of yachting and deep-sea fishing at its best.

PUERTO RICO

Here the upbeat timba rhythms of the bongos set an atmosphere that makes everything swing. As a commonwealth protectorate of the United States, you're at home, but away from home . . . and there are no passports or visas, either.

San Juan and the cities of Mayaguez, Ponce and the hundreds of small communities that dot this tropical island offer just about everything the vacationer could want. There are bright, clear, sunny skies overhead and miles of public beaches below. There is fishing, swimming, tennis, golf and waterskiing, race tracks and casinos. There are old forts to explore as well as the native quarters, and a tropical rain forest that stretches up into the clouds. And always, the compelling beat of the Latin rhythm.

BERMUDA

Only 20 miles square, Bermuda is one of those good things that come in small packages. Pink beaches, blue water, and shining pastel houses create a color composite seen nowhere else in the world. Bermuda is a feeling.

Golf, on courses that overlook the ocean, swimming and sailing will take only part of your day. The rest of the time you'll be touring the picturesque island — the only way to do it — on motorbikes or bicycles.

Step back into the 17th century in St. George, and walk interesting streets with names like Shinbone Alley. Over on Kings Square, get a picture of yourself in a stock or pillory, and in Hamilton see "the dunking stool" used to punish nags and gossips. Climb the 185 steps to Gibbs Hill Lighthouse for a stunning view of the island.

Employees join the Club for only \$1, regular membership is \$5 for individuals and \$7.50 for families. And as a further saving, between September 10 and December 10, 1968, Frontier employees will receive a special "Eastern Airlines employee discount" that creates an even greater saving.

Eastern isn't fooling when it says, "We Want Everyone To Fly."

FAL BOARD MEMBER HOLDS U.S. CHAMBER OF COMMERCE PRESIDENCY



ALLAN SHIVERS, FAL Board of Directors member
—President United States Chamber of Commerce.

Looks To Open Area of Business/Government Communications

Allan Shivers, Member of Frontier Airlines' Board of Directors, President of the Chamber of Commerce of the United States and former Governor of Texas boasts a long service record.

Governor Shivers was elected a Texas state Senator at the minimum legal age of 26 and was twice selected Lieutenant Governor. He served as Governor from 1949 to 1957, the longest record of service of any Texas Governor.

As head of the nation's largest business federation, the ex-Governor is working to open up the area of business/government communications and to get the two forces working more closely together in a more constructive manner while reserving the businessman's right to differ and offer alternatives.

Shivers has become a well-known speaker and proponent of modernizing government, speaking out about the crime problem and also increasing business efforts to provide jobs for the disadvantaged.

Born in Texas on October 5, 1907, Shivers received his education in the Lone Star State. He is a graduate from the University of Texas with a B.A. and LL.B. He is also the holder of several honorary degrees. His military career consisted of two years in the United States Army during World War II with service in the European Theater.

Vocations include lawyer, farmer, rancher and businessman.

PRESIDENT'S ASSISTANTS PROVIDE EXTRA TOUCH

Once on board your Frontier Boeing 727 flight, you sit back in the soft, comfortable seat, look out the window to view the spectacular Rockies and suddenly — you realize you forgot to make hotel reservations . . . or perhaps you need a rental car at your destination . . . or maybe you left your brief case or umbrella back at the ticket counter. Well, you just continue to relax, because on board your Boeing 727 flight is a President's Assistant. All you need to do is advise him of your problem and he will do his best to make the necessary reservations for you or have your brief case or umbrella forwarded to your destination.

As an extra service to passengers on all Boeing 727 flights, President Dymond has placed representatives of himself on board to assist you, the passenger, with any difficulties you may encounter. Frontier presently employs 30 of the President's Assistants, whose job it is to see that your flight is as comfortable and relaxing as you want it to be. He can help you in flight with last minute reservations on Frontier or connecting airlines, as well as flight information, baggage, ground transportation, overnight accommodations, etc.

Each of these President's Assistants are gentlemen with long years of experience with Frontier Airlines. They have an exceptional background in the Airline industry and more particularly, within Frontier. They are experts in their field in order to better serve you.

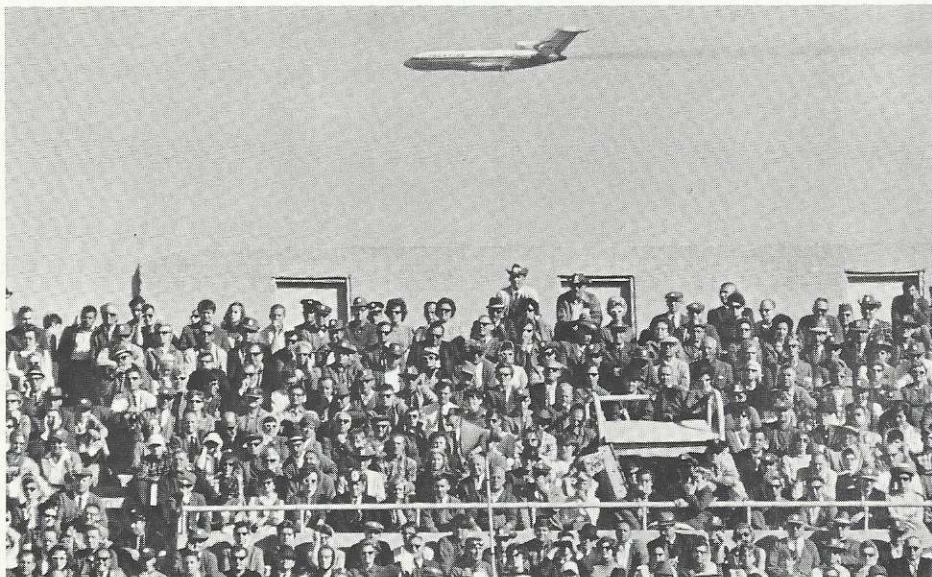
FAL STEWS DRESSED FOR SNOW COUNTRY



FRONTIER STEWARDESS PATTY HEARNE models the carrier's new winter uniform complete with John-T hat, tie scarf and double breasted tie-belted overcoat. New to the uniform is a high suede, fur lined boot, perfect for the ski country Frontier serves.

FRONTIER SCORES WITH GRID BOWL CHARTERS

Did you fly to the Orange Bowl, Sun Bowl, Rose Bowl or Sugar Bowl? Frontier did. This year, the carrier breaks all previous records with Boeing 727 pure jet and jet-prop charters to many of the nation's top grid bowl games. The charter division has been busy for the past several months working out schedules which have Frontier's jets crisscrossing the nation daily with as many as four charters to any one bowl game. Aboard these charters are the nation's top collegiate teams and loyal fans.



THIS FRONTIER BOEING 727 had only minutes earlier landed at Lincoln with 99 football fans headed for the Nebraska-Colorado football game. In conjunction with Denver radio station KHOW, Frontier flew two round-trip charters to the Nebraska-Colorado tilt. This "grab shot" was taken by a Lincoln Star Journal football photographer.



IN DENVER, COLORADO buff fans group momentarily for a photo prior to departing for Lincoln and the Colorado-Nebraska ball game.

FLYING FRONTIER TO BAHAMAS



MEMBERS OF AUTOMOTIVE DISTRIBUTORS, INC. from Kansas City prepare themselves for a bit of British influence as they prepare to fly Frontier to the Bahamas.



The Chase-Park Plaza

ST. LOUIS' DISTINGUISHED HOTEL

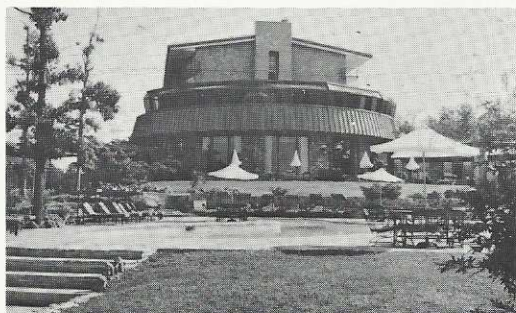
and the

Lodge of The Four Seasons

MIDWEST'S FINEST RESORT

Lake Ozark, Missouri

A resort hotel . . . 60 minutes from the Chase-Park Plaza



75th Anniversary Year

Since 1892, a
Colorado tradition in
fine food, gracious
service, luxurious
accommodations.



THE *Brown Palace* HOTEL DENVER, COLORADO

FOR RESERVATIONS CALL 825-3111

Karl W. Mehlmann, General Manager

Skiers Receive Excursion Fares To Top Ski Areas

Lift Tickets, Air/Ground Transportation, Meals and Lodging Included

Special Winter Excursion Fares saving skiers more than 33% in costs are now available on Frontier Airlines to the popular Western ski areas of Jackson Hole, Mt. Werner and Purgatory. The all inclusive plans include transportation, both air and ground, lift tickets, food and lodging.

Frontier, which serves over 27 ski areas throughout the Rocky Mountain West and Southwest, has joined with Jackson Hole, Mt. Werner and Purgatory to offer the special package plans on a round-trip basis between any one of the three areas and 12 major skier-oriented Frontier-served cities. They are: Albuquerque, Amarillo, Dallas, El Paso, Kansas City, Lincoln, Oklahoma City, Omaha, Phoenix, St. Louis, Tucson and Tulsa.

Skiers originating in cities other than those mentioned above may use the fare in combination with other discount fares offered by Frontier as well as connecting air carriers. This will enable skiers from outside the area served by Frontier to fly into any one of

the gateway cities on a reduced fare, thereby picking up the skiers special at the Frontier city.

Under the new excursion fares, a skier's cost for air fare only on a round-trip basis, for example, would be: between St. Louis and Purgatory, \$94.00; between St. Louis and Mt. Werner, \$88.00; and between St. Louis and Jackson Hole, \$117.00. Under the normal fare, this would have cost the skier \$141.40 to Purgatory; \$132.00 to Mt. Werner; or \$176.00 to Jackson Hole.

An example of complete package costs for five days and four nights for one person from St. Louis to Purgatory would be \$140.50; to Mt. Werner, \$132.50 and for Jackson Hole, \$175.20.

Explaining in more detail the great savings to be derived from this unique fare is Frontier's new Ski/Fly brochure available to skiers. Send for this Frontierland ski brochure at: Frontier Airlines, Ski Department, 5900 E. 39th Avenue, Denver, Colo. 80207.



BIG EIGHT CONFERENCE QUEENS MEET

Big Eight Conference Queens and prominent TV sports announcers joined together at Lincoln for a special tribute to the Big Eight Conference. On hand for the Thanksgiving Day Game between the U. of Nebraska and the U. of Oklahoma are left to right Jill Trousdale, Iowa State U., Nancy Miller, U. of Kansas, Gail Skinner, U. of Nebraska, Bud Wilkinson, ABC Network sports announcer, Geneva Sugarbaker, U. of Missouri, Chris Schenkel, ABC Network sports announcer, Susi Schwab, Kansas State U., Suzi Isaacson, U. of Colorado, and Mary Lewis, Oklahoma State U.

Cheryl Craig, U. of Oklahoma was not present for photograph but did join later for the game and holiday activities.

REGIONAL JETS PROVIDE CONNECTS FOR CROSS COUNTRY TRIP

Another historic trip now appears on the chart of famous aviation trail blazing events. Miss West Coast Airlines, Carol Clark, became the first person to travel coast to coast exclusively by regional airline pure jet. In the adjoining photo, Miss West Coast follows through with her theme — "A Christmas Kiss from Carol." The lucky party is Howard Hicks, Director-Transportation, Denver Chamber of Commerce. Waiting in turn for a Christmas Kiss from Carol is Dick Houghton, Chairman-Aviation Committee, Denver Chamber of Commerce.

To complete her cross country trek, Miss Clark flew Frontier Airlines pure jet from Salt Lake City to St. Louis. She originated in Seattle and terminated in Providence. Other airlines on which she flew included West Coast, Ozark, North Central, Mohawk and Allegheny.



The meeting of the queens at Lincoln was made possible by the Chevrolet Division of General Motors, Inc. and Frontier Airlines.



JAN., 1968 • Vol. 17—No. 1

Edited by the

PUBLICITY DEPARTMENT

Frontier Airlines, Inc.

5900 East 39th Avenue

Denver, Colorado

E. H. GERHARDT, Dir., Publicity
NEAL AMARINO, Mgr. News Bureau
KANDEE STEPHENS



News material may be reproduced
without permission.

FRONTIER AIRLINES

5900 EAST 39TH AVENUE
DENVER, COLORADO 80207