



FRONTIER NEWS

VOL. 16 — NO. 4

Published by Frontier Airlines

JULY, 1967

FRONTIER AND CENTRAL TO MERGE

Frontier Airlines and Central Airlines informed the Civil Aeronautics Board (CAB) of an agreement reached calling for a merger of the two companies. The agreement was subject to approval by the Boards of Directors of both companies. This approval has already been granted by both Boards. Approval is now needed by the stockholders of the two carriers and also by the CAB.

Just prior to press time word was received that the CAB's Bureau of Operating Rights recommended merger of Frontier and Central.

In its brief to CAB Examiner F. Merritt, the Bureau said this merger is in the public interest since it would involve the acquisition of a smaller airline by a relatively strong local service carrier with excellent future prospect.

In an initial CAB hearing, which was concluded in one day, June 27, Frontier Airlines' President, Lewis W. Dymond, was queried by legal counsel for Continental Air Lines, counsel for the Bureau of Operating Rights, the Airline Dispatchers Association and the International Association of Machinists and Aerospace Workers. The CAB asked that all briefs from participating interested parties be submitted within one week of that date.

The expedited hearings, as asked for by President Dymond, which were expected to run two or three days, gave promise that the merger of Frontier and Central would be concluded later this summer.

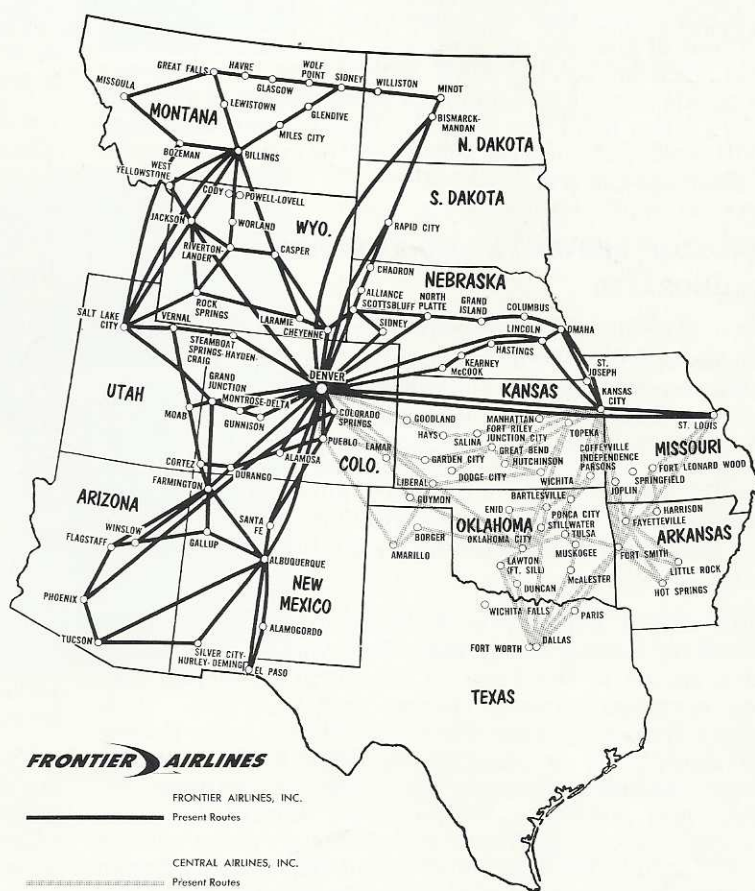
Merger terms will provide for an exchange of one share of Frontier stock for $3\frac{1}{2}$ shares of Central stock, with the merged company being Frontier Airlines. It is expected that this merger will be finally consummated in less than six months.

"We view this merger as another major step in improving not only our position, but the excellence of service throughout Frontier's present system with obvious similar benefits to flow also to the system now being served by Central," Mr. Dymond stated.

MAJOR POINTS STRESSED AT HEARING

L. W. Dymond, testifying in behalf of the merger at the CAB hearings, stressed that the primary goals of

FRONTIER-CENTRAL COMBINED ROUTE SYSTEM



the merger are to provide the best possible service to all of the 111 communities which would be affected by the combination of the two companies. He also stressed that the merger will aid in eliminating the need for subsidy of both carriers. This will be the result of an expected \$1,375,000 in increased revenues which will produce an expected net income of \$415,000 in the first full year of operation of the merged companies. Dymond went on to stress that increased efficiencies and reduced unit operating costs will further enhance the position of the merged company.

(Continued on page 7, column 2)

PENDING MERGER/NON-STOP DENVER-ST. LOUIS SERVICE UNDERSCORE COMPANY'S GROWTH

At the expedited hearing on the Frontier-Central Airlines Merger proceedings before the Civil Aeronautics Board (CAB), another major step was taken to merge the routes, personnel and properties of the two companies.

In testifying before the CAB, we stated, "The merger will be highly beneficial to all concerned — the traveling public will benefit from improved service; the general public and the United States Government will benefit from reduced subsidy; the employees will benefit from increased wages and better opportunities for advancement; and the stockholders will benefit by reason of increased earnings." A few weeks ago, the Boards of Directors of both Frontier and Central approved the initial merger agreement. Stockholders of both companies met the morning of July 27 and voted in favor of the merger proposals. It is hoped that the final decision by the CAB will approve the merger proposals later this summer to bring improved services to 111 cities in 14 states of the Rocky Mountain West, Southwest and Midwest served by the combined routes of Frontier-Central.

NON-STOP DENVER-ST. LOUIS SERVICE INAUGURATED

Another successful growth factor in the continuing success story of Frontier Airlines was the immediate public acceptance of Frontier's through-plane service between Denver, Lincoln, Kansas City and St. Louis. So successful was this acceptance beginning immediately with the inauguration of the first service on June 13, that Frontier was able to advance the inauguration date of its non-stop service between Denver and St. Louis from July 15 to the earlier June 29 beginning date.

An earlier delivery of Frontier Airlines' fifth 99-passenger Boeing 727 in early July was also a contributing factor to the June 29 inauguration of two non-stop services between Denver and St. Louis. This makes five daily round-trip operations with Boeing 727 equipment in addition to Convair 580 service, which provides through-plane service between St. Louis and Nebraska communities. Grand Junction, Colorado also is provided with through-plane service to St. Louis and additional round-trip service began on July 15 with an added schedule linking Salt Lake City with both Kansas City and St. Louis.

Frontier Airlines' stature as an important factor in the growth of the area which it serves will be substantially strengthened with the successful merger with Central Airlines and the continued growth of its important Denver - Lincoln - Kansas City - St. Louis jet route.



President and Chairman of the Board

WORTHY OF SUPPORT

Traveling northwest or southwest from Rapid City by commercial airliner is a comparatively difficult matter. There is no direct way to reach Billings or Great Falls in Montana or Omaha or St. Louis to the southeast.

This may all be remedied if the Civil Aeronautics Board looks kindly upon an interesting proposal by Frontier Airlines. The CAB could be excused if it is amazed to learn Frontier would provide the service without a subsidy. As one of the smaller airlines, Frontier is subsidized, but the airlines apparently believes it can operate profitably between Great Falls and St. Louis. Intermediate points would be Rapid City, Omaha and Kansas City, all dependent on highly circuitous connecting carrier services involving lengthy travel times and high fares.

Frontier President Lewis W. Dymond should receive no argument on his contention that the present service is unusually inadequate and inconvenient.

Support of Frontier's proposal by Black Hills communities and South Dakota would be consistent with continuous efforts to improve air travel. Prompt attention to the request could mean new northwest-southeast service by this fall.

(This editorial, "Worthy of Support," was reprinted with permission from the Rapid City Journal — May 18 edition.)

FIRST IN AIR SERVICE

Frontier Airlines is to be commended for planning to begin its expanded air service from Salt Lake City to St. Louis, via Denver, on June 13, the day the Civil Aeronautics Board authorization becomes effective.

Although CAB granted Frontier 90 days to effect the service, it is typical of the prosperous, progressive, growing airline that it would be ready to go into operation on the first day. No other airline granted extended service — there were five in all — has yet announced its expanded schedule.

The new flights are the results of the CAB rulings in the Pacific Northwest-Southwest Airlines Case which granted Frontier the extended service. Without this added service, Salt Lake City and Denver would have been completely ignored in the CAB ruling.

By serving St. Louis twice daily with Boeing 727 airplanes, Frontier will be opening up a historical gateway to the West. With St. Louis the 10th largest city in the U.S., the new service should enable many air travelers to bypass the crowded Chicago terminal.

Frontier, pioneer of the popular youth, half and family plan fares, presently serving 65 cities in 11 states, is only 20 years old. The granting of extended air service is a compliment to the company's growing ability to serve the growing needs of public air service. Frontier is to be commended for expediting its enlarged opportunities to serve.

(This editorial, "First in Air Service," was reprinted with permission from the Salt Lake City Deseret News — May 5 edition.)

FRONTIER ARROW-JETS SPAN THE WEST



With five spacious 600 mph Boeing 727 jet aircraft in service, Frontier is spanning the Rocky Mountain West, Midwest and Southwest with a totally new image of Frontiersman service, efficiency and low-cost fares.

Since inaugurating new Boeing 727 service on September 30, 1966 between Denver and Kansas City by way of Lincoln, the carrier has expanded its service to include its newest city of St. Louis as well as its other heavily traveled markets, such as Albuquerque, El Paso, Tucson, Phoenix, Colorado Springs, Grand Junction and Salt Lake City.

Over these routes, Arrow-Jet flights fly daily providing both first-class and coach accommodations, a reduction in time between points and Frontier's industry-leading low-cost fares.

Supporting the carrier's five Arrow-Jets is a sleek fleet of 21 53-passenger Convair 580 jet-props which also provide service for these markets as well as all the other Frontier-served cities between St. Louis in the East and Salt Lake City and Phoenix in the West and Southwest and from the Canadian border to the popular border towns of El Paso/Juarez in the South.

NEW ARROW-JET SERVICE TO ST. LOUIS is officially inaugurated by (left to right): Arthur Giffin, District Sales Manager in St. Louis, FAL; Susan Kutscheid, Frontier stewardess; Aloys P. Kaufmann, President, St. Louis Chamber of Commerce; Thomas F. McGuire, City Councilor, St. Louis; Bill Lil, St. Louis Mayor's Ambassadors; Lewis W. Dymond, President, FAL; Mrs. Dymond and David E. Leigh, Airport Manager, Lambert Field, St. Louis.



NON-STOP SERVICE FROM KANSAS CITY TO ST. LOUIS and Denver is celebrated by (left to right): J. D. Robins, City Councilman, Kansas City, Mo.; Don Fitzray, Kansas City, Kansas Chamber of Commerce; John Latshaw, Kansas City, Mo. Chamber of Commerce; Mrs. Dymond; Jeff Hillelson, City Councilman, Kansas City, Mo.; Lewis W. Dymond, President, FAL and Herb Schmidt, Regional Sales Manager, FAL, Kansas City.

FLY LINCOLN

LINCOLN TO ST. LOUIS 727 SERVICE is inaugurated by (left to right): Dick Cummins, City Sales Manager in Lincoln, FAL; Lawrence C. Sills, Director of Sales, FAL; Emmett Junge, Lincoln Safety Director; Fred Eiche, Executive Secretary of Airport Authority; John DuPont, Transportation Manager of the Chamber of Commerce; Rolly Harr, Airport Authority Director; Walter Nolte, Chamber of Commerce President and Glenn Emmons, Sales/Service Manager, Lincoln for Frontier.



ARROW-JETS LINK WESTERN CITIES



Frontier passengers can now Arrow-Jet between Albuquerque and Denver non-stop in just a little over one hour while enjoying Frontiersman service high above the historic Western Plains and scenic Rocky Mountains. Non-stop service between Albuquerque and Tucson is also flown in 51 minutes. Through service is provided to Phoenix and Colorado Springs.

INAUGURATING ARROW-JET SERVICE at Albuquerque are (left to right): T. Robert Boyle, Regional Sales Manager for Frontier in Phoenix; Paul L. Benscoter, Vice President of Sales and Service, Frontier; Clyde Sharrer, Director of Aviation, Albuquerque and Vern Carlson, Assistant to the President of Frontier.

AT PETERSON FIELD in Colorado Springs celebrating the inauguration of 727 service are (left to right): Vern Carlson, Assistant to the President, Frontier; Former Mayor of Colorado Springs Harry Hoth; Paul L. Benscoter, Vice President of Sales and Service, Frontier and Colorado Springs present Mayor, T. E. McCleary.



IT WAS ALL SMILES under the bright sun in Phoenix as Frontier inaugurated its Arrow-Jet service. Left to right are: T. Robert Boyle, Regional Sales Manager for FAL, Phoenix; Paul L. Benscoter, Vice President of Sales and Service, FAL; James Vercellino, Director of Aeronautics, State of Arizona; William Ralston, Airports Director—Phoenix; Vern Carlson, Assistant to the President, FAL; Dr. Douglas Cochran, Professor of Business Administration, Arizona State University and Charles "Lucky" Leverett, Director of Publicity, Phoenix Chamber of Commerce.



GRAND JUNCTION AND FRONTIER AIRLINES OFFICIALS dedicated through-plane jet service from Grand Junction to St. Louis. Taking part in the inaugural ceremonies are (left to right): Ed Lamm, County Commissioner; Bill Anderies, County Commissioner; Gus Byrom, Airport Manager; C. E. McCormick, City Councilman; Clyde Davis, Walker Field Fixed-Base Operator; Richard Gray, City Manager; Paul L. Benscoter, Vice President of Sales and Service, FAL; Ray Meacham, Mayor; Preston Walker, Publisher of the DAILY SENTINEL and FAL Board Member and Dale Hollingsworth, Manager of Chamber of Commerce.



AT TUCSON, AN OVERWHELMING response was given to new Arrow-Jet service by (left to right): Charles Broman, General Manager, Tucson Airport Authority; James Butler, Sales/Service Manager, FAL, Tucson; Fred Vance, Vice President and General Manager of KGUN-TV, Tucson; Robert Markley, Publicity Manager, Tucson Chamber of Commerce; Miles Hubka, Manager, Industrial Development, Tucson C of C; Joe Metcalf, Vice President, Tucson C of C; Vern Carlson, Assistant to the President, FAL; Paul Benscoter, Vice President of Sales and Service, FAL; Jack O'Dowd, President, Tucson Airport Authority and Dan Goodyear, City Sales Manager for FAL in Tucson.

STANDBY FARE NOW IN EFFECT FOR ST. LOUIS

St. Louis travelers can now combine a low-cost Standby Fare on Frontier flights between that Gateway City and the Frontier-served cities of Denver, Salt Lake City, Albuquerque, El Paso, Phoenix and Tucson.

Early in June, Frontier was authorized by the Civil Aeronautics Board (CAB) to extend this Standby Fare between St. Louis and the six other cities as well as to other city pairs served by the carrier. These reduced fares are comparable to, and in some cases lower than, bus

fares. Anyone can fly at approximately bus fare rates using the 99-passenger Boeing 727 jet service recently inaugurated between St. Louis and the Rocky Mountain West/Southwest.

There is no age limit, no ID card and no limitation as to time or day needed to use this fare. It is the only fare of its kind available in the United States. By foregoing an advanced reservation and standing by for an available seat at flight time, a passenger will be ticketed at sharply reduced fares. If a passenger stands by for a flight and is not accommodated, Frontier guarantees a confirmed reservation on the next available Frontier flight at that same low fare.

Denver/St. Louis Non-Stop Service Now Flying

Numerous Reservations Prompt Inaugural Ahead Of Schedule

Because of immediate public response to through-plane service inaugurated between Denver and St. Louis via Kansas City since June 13, Frontier stepped up its plans for non-stop service between Denver and St. Louis to June 29.

Since inaugurating its new Denver/St. Louis service, Frontier Airlines' jet flights have averaged a load factor of over 60%. This immediate public acceptance of direct one-plane service combined with an earlier delivery date of the carrier's fifth Boeing 727 jet are factors behind the plan to inaugurate non-stop service over two weeks earlier than originally planned.



CHIEF WITNESSES TO FIRST DIRECT SERVICE between Denver and St. Louis are (left to right): E. C. McCormick, past Mayor of Grand Junction; Tom Curigan, Mayor of Denver; Lewis W. Dymond, President of Frontier and Harry Hoth, former Mayor of Colorado Springs.



THE FIRST TWO STANDBY PASSENGERS to take advantage of Frontier's unique low-cost fare between Denver and St. Louis are (upper left): James Sharos and his brother Peter, both of East St. Louis. Welcoming them aboard their flight are Vince Davis, (upper right) a member of the President's Assistants staff and Frontier stewardess Barbara Bouskas.

West Yellowstone Service Begins



CELEBRATING FRONTIER'S NEW AIR SERVICE to West Yellowstone in the heart of the Big Sky Country are (left to right): Kaye Burgon, District Sales Manager in Salt Lake City, FAL; Mac Maholland, Superintendent of Flight Operations, FAL; Bill Rowley, Manager-Agency, Tour and Interline Sales, FAL; Vern Carlson, Assistant to the President, FAL; Paul Benscoter, Vice President of Sales and Service, FAL; Mrs. Billy Smith, Mayor of West Yellowstone, Montana; John Clay, Yellowstone National Park Ranger; Willard Frazier, Mayor of Billings, Montana; Robert Lonegren, Yellowstone National Park Ranger; Frontier Stewardess Carol Pickett and Art Bazata, President of Yellowstone Park Company.

New air service to West Yellowstone, Montana, gateway to popular Yellowstone National Park, began by Frontier on June 1, 1967.

Now on Frontier, vacationists can fly directly to one of this nation's most outstanding parks to view its fantastic wonderland of 3,472 square miles filled with over 200 geysers, a myriad of brilliant hot springs, pools, thermal phenomena and its wildlife sanctuary.

Frontier's flight schedules provide daily round-trip service between West Yellowstone and Denver and between West Yellowstone and Billings, Montana.

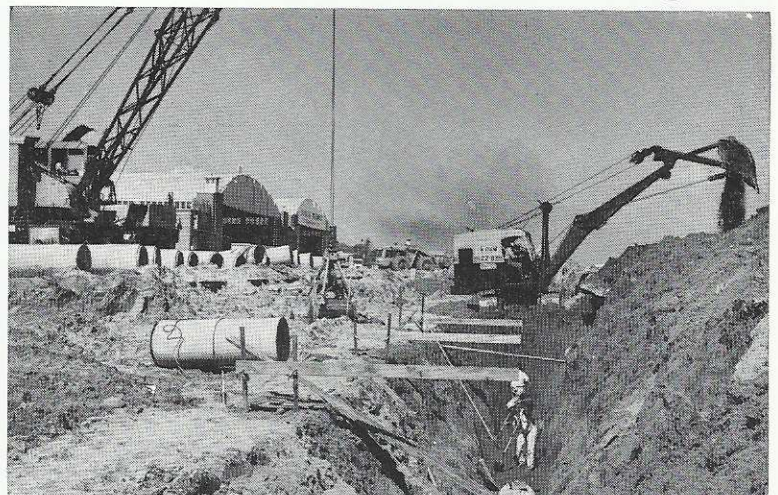
Connections to and from this famed national park area can be made at Denver for major Pacific Coast cities as well as points in the Midwest, Southeast and East Coast. At Billings, connections can also be made to and from flights for the Minneapolis area and other major eastern cities.

For vacationers, Frontier has put together several three to four day vacation plans, each providing a fascinating incite to the wonderful world of Yellowstone.

\$7.2 Million Operating Base Construction Begins



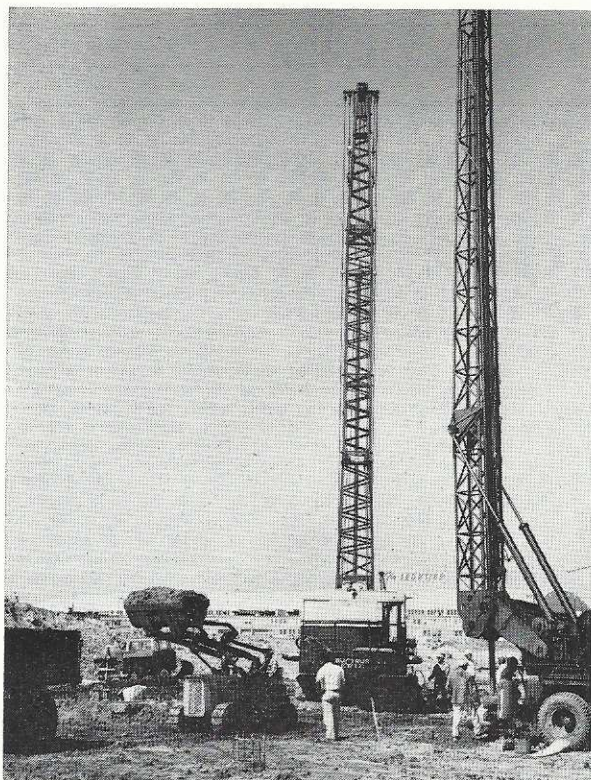
SHOULDER TO SHOULDER in ground breaking ceremonies for Frontier's new Operating Base Complex are (left to right): Denver Mayor Tom Currigan; Frontier President Lewis Dymond and Colorado Governor John Love.



TRENCHES ARE DUG and pipes are fitted by the hustling activity of men and machines within view of Frontier's present hangar facility (upper left) at Denver.

Construction is well underway after having been started by ground breaking ceremonies paving the way for Frontier's huge \$7.2 million Operating Base Complex at Denver's Stapleton International Airport.

The building, a full cantilever type, will be the largest hangar structure at Stapleton Field. It will house the carrier's Maintenance and Operations offices, its Engineering, Flight Training and Reservations Departments plus a new electronic computer, which will streamline Frontier's reservations, inventory and accounting procedures.



WORKMEN BUSY THEMSELVES drilling holes for casings as basic construction steps for the huge complex.

Las Vegas Air Service Discussed

New airline service between Las Vegas and Denver and between Las Vegas-Salt Lake City-Los Angeles and San Diego by Frontier Airlines was discussed recently by President L. W. Dymond and Las Vegas civic leaders. During this session, Frontier's pattern of service was outlined to the group. The initial schedule calls for three daily round-trip flights between Las Vegas and Denver.

Two of the three daily round-trip flights would be operated with 99-passenger Boeing 727 jets with non-stop service from Las Vegas to Denver and continuing through-plane service to Kansas City and St. Louis. The third daily round-trip would be flown with 53-passenger jet-prop Convair 580 equipment. It would serve Grand Junction, Colorado between Las Vegas and Denver with continuing through-plane service to and from Rapid City, South Dakota.

In another, the Salt Lake City-Las Vegas - Southern California Service Case, Frontier proposes the first one-plane service between Las Vegas and Billings, Montana which will also serve Salt Lake City. The carrier would operate additional competitive one-plane service from Las Vegas to Los Angeles and Las Vegas to San Diego, with two daily round-trip flights to be operated with jet aircraft providing both first-class and coach services.

Frontier And Central To Merge

(Continued from Page One)

Central Airlines serves a six-state area including Arkansas, Colorado, Kansas, Missouri, Oklahoma and Texas. 46 cities are served within this region. General offices of Central are located at Fort Worth, Texas. They operate 11 Convair Dart 600 aircraft and 12 DC-3's. Delivery of two DC-9 pure jet aircraft is to be made late in 1967. The Fort Worth-based carrier employs 903 personnel.

Presently, there are five common cities served by both carriers; Denver, Colorado Springs, Pueblo, Kansas City and St. Louis. Denver-based Frontier serves 70 cities including its newest addition, St. Louis, throughout an 11-state region of the Rocky Mountain West, Southwest and Midwest. The carrier presently operates 5 Boeing 727 aircraft, 21 53-passenger Convair 580 jet-props, 5 DC-3's and holds an option for 5 additional B-727's. Frontier employs 1670 personnel.

Controlling interest of Frontier Airlines was purchased in 1965 by RKO General, Inc., a subsidiary of General Tire and Rubber Company.

"Act on Frontier" Moss Urges CAB

Senator Frank E. Moss, Democrat, Utah, said in a recent Senate Meeting that the Civil Aeronautics Board (CAB) should move expeditiously on new hearings concerning Salt Lake City service.

Senator Moss congratulated Frontier Airlines on its service to Utah and inserted in the Congressional Record a Salt Lake City DESERET NEWS editorial (see Page two, (FRONTIER NEWS) backing the Frontier request for more Salt Lake City service authority.



THIS IS THE BEFORE OPENING VIEW of Frontier Airlines' new St. Louis City Ticket Office located at 442 Mansion House Center. Heading the carrier's City Ticket Office is Arthur A. Giffin, District Sales Manager. Also representing the airline in St. Louis are sales representatives Duane Jackson and Allen Soukup.

JUNE PASSENGER TRAFFIC SETS NEW 20-YEAR RECORD

A healthy 43% increase in passenger miles in June established a new 20-year record on Frontier Airlines.

During June, 41,611,000 revenue passenger miles was a 43% increase over the 29,100,000 revenue passenger miles established for the month a year ago. This record increase was flown by 124,161 passengers. This was a 32% increase over the 93,898 passengers for this month last year and was another high record for passenger usage over the routes of Frontier Airlines.

Two other records were set during June when 5,722 passengers used the airline on the last day of the month, June 30. Frontier's Standby Fare was used by 7,022 persons, another record for a single month. The Standby Fare, which saves travelers approximately 50% on the regular fare, is available between 36 city pairs on Frontier's system.

**Fly FRONTIER
To
WEST YELLOWSTONE
Gateway To
Yellowstone National
Park**

Governor Boe Becomes Newest Frontiersman



SOUTH DAKOTA GOVERNOR Nils A. Boe is presented with his Frontiersman Club plaque by Frontier's City Sales Manager in Rapid City, Gail Godbey.

FAL Air Freight Program Outlined to Cargo Forwarders



AIR FREIGHT FORWARDERS with offices in Denver meeting to receive details on Frontier's new Reserved Arrow-Jet Freight included representatives from Airborne Air Freight, Colorado Cartage, Pacific Air Freight and Emery Air Freight. A. Kenneth Stemler (right), Frontier's Manager of Cargo and Military Sales, was chairman of the program.

In a meeting with air freight forwarders who have offices in Denver, Frontier Airlines' new Reserved Arrow-Jet Freight program was discussed in detail. Key points received by the air freight forwarders included the greater speed with which air freight moves on Frontier on a reserved space basis and the availability of jet cargo space reservations in all major cities served by Frontier's fleet of Arrow-Jet aircraft. Those Frontier-served cities providing Reserved Arrow-Jet Freight service include St. Louis, Kansas City, Lincoln, Denver, Grand Junction, Salt Lake City, Colorado Springs, Phoenix, Tucson, Albuquerque, and El Paso. Reserved Arrow-Jet Freight connections can be made with other carriers who are operating similar programs at those major terminals served by Frontier.

TRAVEL AGENTS FLY TO BLACK HILLS



SEVENTEEN TRAVEL AGENTS from Arizona, New Mexico and Texas depart on a Frontier Airlines Convair 580 jet-prop for a tour of the famed Black Hills of South Dakota and Mt. Rushmore. Displaying a Mt. Rushmore poster prior to the group's departure is Lawrence C. Silles (left) Director of Sales, FAL and Paul L. Benscoter, Vice President of Sales and Service, FAL. On the extreme right is Bill Rowley, Manager of Frontier's Agency, Tour and Interline Sales. Travel agencies represented on the trip included Halabill Travel, Scottsdale, Arizona; Jarretts Travel, Phoenix; Continental Bank Travel, Phoenix; Cahill-Edmund Travel, Phoenix; Universal Travel, Tempe; Way-faring Travel, Phoenix; AAA World Wide Travel, Tucson; Hyways & Byways Travel, Inc., Tucson; Buck Rogers Travel, El Paso, Texas; Dyal Travel Service, El Paso; Ewald Travel, El Paso; AAA World Wide Travel, El Paso; Bolack International Travel, Albuquerque, New Mexico.

FRONTIER STEWARDESSES FLYING AHEAD WITH NEW FASHIONS

Frontier Airlines' stewardesses are flying in high fashion in their lively new turquoise pants suits of dacron and wool by Travilla of Los Angeles.

Following a theme of high fashion, yet practical, Frontier's stewardesses are now wearing a white rolled collared blouse of dacron whipped cream material with three quarter length sleeves under A-line jumper pants. The loosely fitted jacket has a military-type standup collar which fits under the blouse collar giving a hint of the astronaut influence.

The turquoise jacket is accented by an ornamental Frontier crescent of gold. Accessories to this smart-appearing outfit consist of gold patent boots, breaking at the calf, flats which are optional for in-flight serving and a matching gold purse. The uniform is topped with a little boy-type billed hat of turquoise. For inclement or windy days, Travilla designed a gaily printed silk scarf of gold, turquoise, lavender and green to be worn under the John-T hat. Also for inclement weather is a smart turquoise top coat with gold lapels, double breasted effect and tie belt.

For in-flight serving, the girls change into a more casual A-line striped smock of blues, greens and golds. The three major colors of turquoise, gold and white are Frontier's basic colors.



STEWARDESS NANNETTE GLAUSER proudly models Frontier's new turquoise pants suit by Travilla.



COMPLETE SUMMER UNIFORM with overnight bag and inclement weather scarf as worn by Lela O'Connor (left) presents smart look as does that of the in-flight service uniform of the turquoise A-line jumper pants and three quarter-length sleeve blouse and boots worn by Nannette Glauser.



FOR IN-FLIGHT FRONTIERSMAN SERVICE, Sharon Wyatt (right) wears her casual A-line striped smock of blues, greens and golds. All three ways in which the new uniform is worn present a high fashion and practical image.

MOVING UP WITH FRONTIER



WILLIAM M. GROODY
Vice President-Treasurer



CLIFFORD MAGGARD
Sales/Service Mgr.—Flagstaff



LEE DAVIS
Asst. S/S Mgr.—Kansas City

Groody Named Vice President-Treasurer

WILLIAM M. GROODY, Treasurer for Frontier during the past five years has been promoted to Vice President-Treasurer.

During the past year, Groody has been involved in arranging for major financing of Frontier Airlines' expanding jet fleet and bond agreements with the City of Denver for the construction of a major Hangar Maintenance and Operations Base at Stapleton International Airfield.

CLIFFORD MAGGARD is Frontier's new Sales/Service Manager in Flagstaff. During the past six months, Mr. Maggard worked as acting Sales/Service Manager for the carrier in Alamosa, Colorado. He joined Frontier in November, 1955 as a Station Agent.

LEE DAVIS has been named Assistant Sales/Service Manager in Kansas City. He transfers from the Flagstaff station. He began work with Frontier in October of 1960 in Sidney, Montana.

LaVERNE MARTIN is Frontier's new Sales/Service Manager in Great Falls. Previously, he was a relief agent within the Northern Division. Martin joined Frontier in February, 1959 as a Station Agent in Farmington.

MAX WILLIS transfers as Sales/Service Manager to the carrier's new West Yellowstone station, gateway to Yellowstone National Park. Formerly, he worked as Senior Station Agent for FAL in Phoenix. He has been with the carrier since November of 1951 when he began as a Station Agent.

Grover Heads New Department

DONALD E. GROVER has been named to the newly created position of Manager of Advertising and Sales Programs for Frontier. In his new position, Mr. Grover will co-ordinate advertising and sales programs with the airline's advertising agency and with Frontier's sales personnel located throughout the 11-state system served by the carrier. He will work under the direction of Lawrence C. Sills, Director of Sales. During the past two and one half years, Grover worked for the carrier in Denver as an Interline Sales Representative. He joined Frontier in November, 1963 as a Sales Representative in Phoenix.

SALES STAFF INCREASED BY SIX

DUANE JACKSON and **ALLEN SOUKUP** have been added to the St. Louis sales staff as Sales Representatives. Jackson, a former teacher and coach in Salt Lake City, joined Frontier in June of this year. Soukup has been with Frontier since 1966, when he joined the carrier as a Station Agent in Lincoln.

SERVICE AWARDS



20 YEAR SERVICE PINS—MAY

Walker, E. L., Capt., DEN
Kopplitz, R. G., Capt., DEN
Deeming, R. F., Foreman, DEN
Stoner, A. C., Foreman, DEN
Keene, E. R., Dispatcher, DEN
Hoffman, R. G., Capt., DEN

JUNE

Sims, G. L., Capt., PHX
Kirkwood, W. E., Sls., Svc. Mgr., RKS
Hart, F. M., Capt., DEN

JULY

Ferguson, M. A., Capt., SLC
Lambourne, R. P., Capt., DEN
Mooney, A. S., Capt., DEN
Schade, J. B., Capt., SLC

15 YEAR SERVICE PINS—MAY

Lutkiewicz, R. L., Stn. Agt., DEN
Hobbs, G. E., Stn. Agt., SLC
Lux, H. E., Capt., DEN

JUNE

Lentell, R. N., Asst. Consol. Res. Mgr., DEN
Cashel, J. A., Dispatcher, DEN

JULY

Peck, E. L., Mech., DEN
Dailey, D. C., Sr. Stk. Clrk., DEN

10 YEAR SERVICE PINS—MAY

Gertschitz, J. L., Res. Agt., DEN
Eller, M. K., Sr. Agt., GJT
Key, A. M., Sls. Svc. Mgr., GGW
Kreitman, P. R., Sr. Stn. Agt., STL
Stevens, F. D., Sr. Agt., DEN
Thompson, F., Sls. Svc. Mgr., CDR

JUNE

Willey, J. E., Supt. Tech. Svcs., DEN

JULY

Byers, K. L., Stn. Agt., LNK
Engstrom, R. L., Sr. Agt., MKC
Harms, L. H., Stn. Agt., LNK
Horn, A. G., Stn. Agt., ABQ
Pacl, D. G., Sr. Agt., OMA
Witkowski, L., Stn. Agt., GJT

5 YEAR SERVICE PINS—MAY

Safy, M. M., Personnel Rep., DEN

JUNE

Brenizer, C. L., Stn. Agt., BFF
Symmes, F. L., First Officer, SLC
Blair, C. E., First Officer, DEN
Dunlap, V. K., Res. Agt., DEN
Lawson, R. E., Stn. Agt., DEN
Erickson, K. E., First Officer, DEN
Stevens, R. P., First Officer, DEN
Ullrich, R. C., First Officer, DEN

JULY

Hass, J. N., First Officer, DEN
Rampton, D. B., First Officer, SLC
Siems, J. T., First Officer, DEN
Latta, J. D., Stn. Agt., GJT
Eckhardt, R. J., Stn. Agt., RIW
Jones, E. P., Jr., Stn. Agt., RIW
Gutierrez, R. E., Stn. Agt., ABQ
Carlson, A. E., Stn. Agt., SLC
McGaha, J. E., Stn. Agt., FMN
Schleiger, J. K., First Officer, DEN
Vaudrin, V. V., First Officer, SLC
Truax, H. V., First Officer, DEN

STEPHEN LEE has joined the sales staff in Denver as a Representative. Prior to joining Frontier, Lee worked for a Denver printing firm in sales.

WILLIAM NOVAK is a new addition to the carrier's sales staff in Kansas City. He joined Frontier in 1959 as a Station Agent in Alliance. He has worked as a Joint Airline Military Ticket Office Representative for the carrier at Alamogordo.

JAMES PEARCE is in Sales for the carrier in Phoenix. He joined Frontier in May. He was formerly with an advertising firm in Denver.

NANCY WHITE (photo below) is Frontier Airlines' newest female addition to the sales staff in Denver. The carrier now employs two female Sales Representatives. Prior to joining Frontier in May, Miss White was a hostess for Continental Airlines.



NANCY WHITE
Sales Representative—Denver



DAVID N. BRICTON
Attorney

1,000 Years of Service Represented



ONE THOUSAND YEARS of service with Frontier Airlines is represented in this group. Fifty of the Denver-based carrier's staff comprised of pilots, dispatchers, mechanics and administrative personnel receive their twenty-year pins from Lewis W. Dymond, (in the foreground) President of the airline. Frontier began its eleven-state operation in the West in November of 1946. It today serves 70 cities. Its fleet of five Boeing 727's and twenty jet-prop Convair 580's link these communities in an area which comprises 30% of the Continental United States.

SUPERVISOR OF FOOD SERVICES is Harry A. Rubbright. In his new position, Mr. Rubbright is responsible for the coordination of in-flight food and beverage services throughout Frontier's system.

During the past three years, Rubbright worked as Assistant Manager of Continental Airline's flight kitchen in Denver. He is a graduate of the Dean Junior College, Franklin, Massachusetts and the University of Denver.

Vital Is New Director—System Reservations

JOHN J. VITAL has been named Director of Systems Reservations for Frontier. Vital is a 25-year veteran of the airline industry with extensive experience in airline reservations and sales. He started his career in Chicago with Northwest Airlines and for the past 20 years has served as Reservations Sales Manager for that carrier in New York.

As Director of System Reservations for Frontier, Vital will supervise reservations sales and procedures for the 70 cities served by Frontier Airlines.

DAVID N. BRICTON (photo left) has been added to Frontier's legal staff as an attorney. During the past year and a half, Bricton worked as Deputy District Attorney for the first judicial district of Colorado. He is a graduate of the University of Colorado with a B.A. LL.B. He is a member of the bar in the states of Colorado and Washington.

IN MEMORIAM

Three well-known and respected employees of Frontier Airlines have passed away recently — Red Davis, Art Stoner and Carl Zentz.

Services for Harold E. "Red" Davis were held in April at Aurora, Colorado. Harold, who had been working as a mechanic in Denver, passed away at his home. He had been working for Frontier since May of 1947. His date of birth was December 16, 1917. He is survived by his widow Mary; a daughter, Norma Jean Pier; two sisters, Adeliene Davis and Mrs. Irma Hunt, both of Casper and a brother, Robert, of Basin, Wyoming.

Arthur C. Stoner, Foreman-Denver, passed away May 17 following a short illness. He was 61 years of age. Art joined Frontier in May of 1947 as a mechanic in Denver. Surviving are his wife, Katherine; daughters Nichola E. Stoner and Mrs. Arthur Hillis; brother, Collier W. Stoner and two grandsons, all of Denver.

Services for Carl S. Zentz were held Tuesday, May 16, in Aurora. He was 55 years old. Carl passed away at Mercy Hospital in Denver. During the past two years, Carl worked as a Denver based mechanic. Surviving are his widow, Carrie, and four brothers, Ralph and Reo Zentz of Colorado Springs; Mar-scine Zentz of Chula Vista, California, and Harold Zentz of Ramah, Colorado.

All of us at Frontier Airlines extend our deepest personal sympathies to those who are close to these fine individuals.

MAINTENANCE ROUNDUP

by ART KRIEGER

All but the paint

Ever see a "sky hook"? Long a subject of jokes and wishful thinking, now Frontier's Maintenance Department has a good substitute.

The primary purpose of this machine is to spray a hot mixture of Ethylene Glycol and water on planes to remove and prevent the formation of ice on the airfoils. However, if any of the many hydraulic power units or electronic devices in the almost 35 foot high "tail group" require replacement, you guessed it — call for the "sky hook." Light burned out in that red flasher on top of the 29 foot high vertical stabilizer on our CV-580's? "Duck soup" for a mechanic to reach it with this new machine manufactured by DeBoliac.

NEW SYSTEM MAP MOST INFORMATIVE AND COLORFUL EVER

Aboard all Frontier Airlines' aircraft within the seat pockets is the largest, most colorful and informative airline system map of any yet produced.

With the addition of St. Louis as a new Frontier-served city to the East, the carrier has expanded its overall system map to include that area as far East as the Mississippi River and as far West as Los Angeles. North and South, the colorful map, produced by Jeppesen & Company of Denver, extends to the Canadian border and the colorful border towns of El Paso/Juarez.

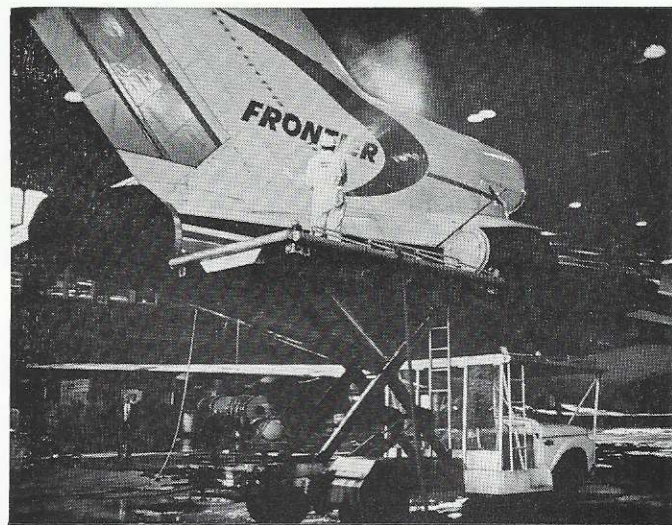
At fifty miles to the inch, the overall map—32½" by 25½"—is the largest sheet-size map produced by any domestic airline.



WORKING OUT THE MANY fine details which go into Frontier's outstanding system map are Roy Marriott, Map Sales Engineer, Jeppesen & Company of Denver and Donald Grover, Frontier's Manager of Advertising and Sales Programs.



DALE DEVRIES OF FLEET SERVICE DEPARTMENT uses the versatile "sky hook" to wash exhaust stains from one of Frontier's new Boeing 727 aircraft.



JOE KRUGER OF FLEET SERVICE is using an elevated truck bed, another useful equipment aid, to reach high enough to rinse off the detergent that is used to remove exhaust stains.

As Frontier passengers comfortably whisk over the historic Rocky Mountain West, Midwest and Southwest region of the United States they may follow the trails made by the early pioneers as they trekked West. Clearly identified on the map are nine famous historical trails. Ten national parks, 32 national monuments and 26 outstanding ski areas are also clearly illustrated through color keys within the new system map.

If each of the 50,000 maps printed were laid end to end, they would produce a stream of paper 25½ inches wide and approximately 25.6 miles in length.

On the reverse side of the map are dynamic, colorful photographs of outstanding scenic points located throughout Frontierland.

THINK BASEBALL . . .

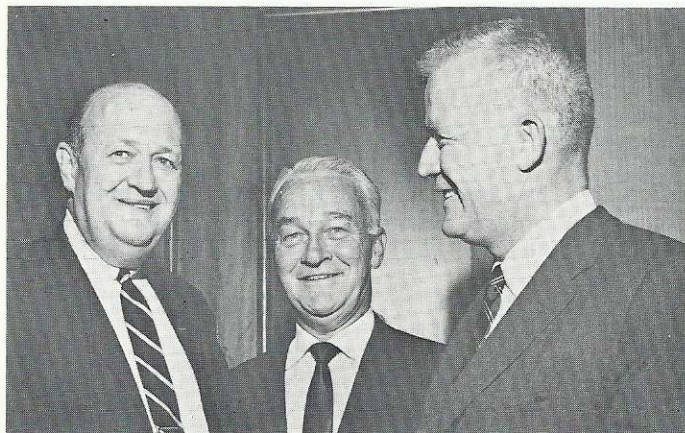
. . . Everyone In Farmington Does

Baseball fever, baseball craze, call it what you will, but it's doing a fantastic job of building tomorrow's major leaguers.

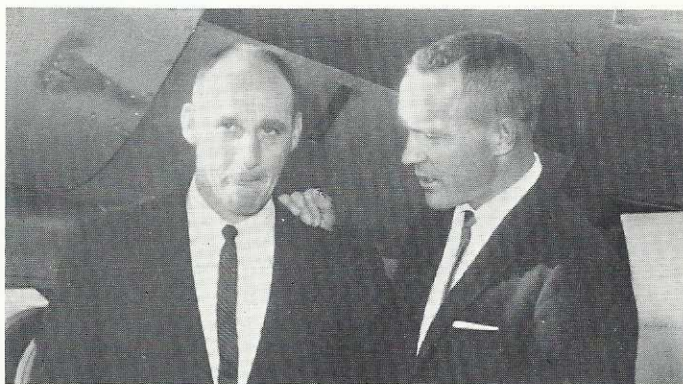
Each year during the summer, the Annual Connie Mack Baseball World Series gets underway in August in Farmington, New Mexico, a major crossroads city for Frontier Airlines. This year, thousands of persons will cram into Farmington's baseball park and take part in the cheering and booing, depending on whose team he is for, helping to lead it on to victory.

This great show of sportsmanship is supported by the world's largest amateur baseball organization, the American Amateur Baseball Congress, which supports upward of 2,000 teams of junior age leaguers (under 19 years old). This year, August 18 to 24 will be the days of meeting for many teams from throughout the nation.

Author/Columnist Visits Frontier



AUTHOR AND COLUMNIST Jim Bishop (center) meets with Jack Fuller (left) of Boettcher and Company, Denver and Lewis W. Dymond, President of Frontier. Mr. Bishop was in Denver to gather material on Frontier, Denver and Central City for his nationally syndicated column.



WARREN SPAHN AND ANDY CAREY join together for a chat as they arrive in Farmington prior to last year's little league baseball action.

Farmington itself produces about 65 to 70 teams which participate avidly in this baseball spectacular.

The training and excitement is at its peak right now and soon the teams will be flying into Farmington on Frontier to give their all. With them will be parents, relatives, friends and baseball enthusiasts from all sectors of the U.S.

There will be a more relaxed atmosphere in and around Farmington as the many junior leaguers and their parents head out after the tournament to bat their eyes at some of the most spectacular scenery in the great Southwest. Nearby Farmington to the West is famed Shiprock, a towering rock mass visible for miles across the desert appearing to be a huge ship at sea. South of Farmington, there is Chaco Canyon. Northwest, there is a colorful Navajo Reservation and just outside Farmington are the famed Aztec ruins.

The town of Farmington itself has much to offer for tourists — and this is especially true at this time of August when the entire city will give its all to host its little leaguers from throughout the nation.

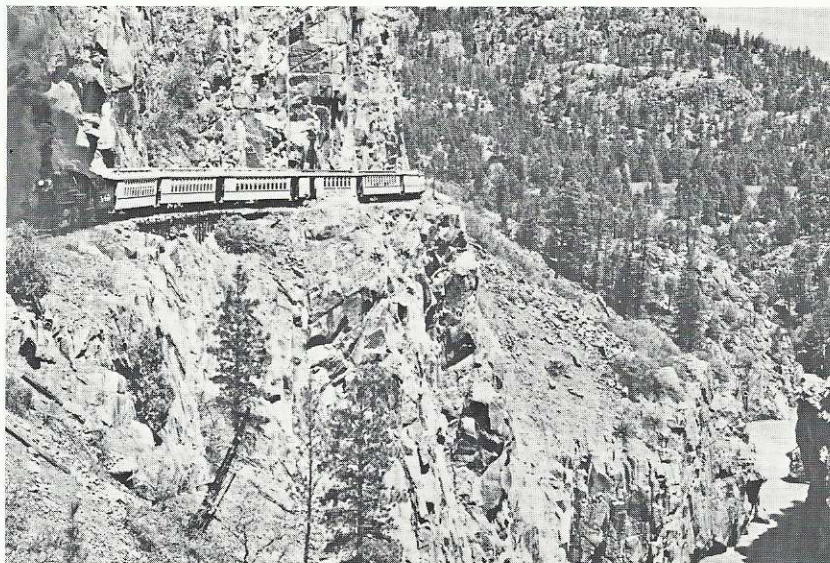
NARROW GAUGE BECOMES NATIONAL HISTORIC MONUMENT

The Rio Grande Railroad's highly popular Narrow Gauge Train, the "Journey into Yesterday," from Durango to Silverton, Colorado, has become a national historic monument.

This 45-mile trip from Durango takes a path hugging the sheer cliffs above the swift-flowing Rio de las Animas River.

It is the last regularly scheduled steam-driven train in operation today.

Frontier Airlines provides regular daily round-trip flights to Durango, which is a jumping off spot for tourists desiring to ride the popular Narrow Gauge and also for those who wish to round out their stay in this four corners area by taking in nearby Mesa Verde National Park. This park is one of ten great national parks served by Frontier.



THE NARROW GAUGE between Durango and Silverton huffs and puffs its way along the sheer canyon walls high above the Rio de las Animas River for a spectacular "journey into yesterday."

TIPS FOR TRIPS

by ANN YANULAVICH

Frontier Airlines passengers now have still another handy gateway to one of the most beautiful national parks — West Yellowstone, Montana. Tourists entering through this new Frontier entrance and leaving through Jackson, Wyoming or vice versa have an opportunity to see both Yellowstone and Grand Teton National Parks with no backtracking.

If you enjoy the great outdoors and have never visited Yellowstone — all I can say is — why not?

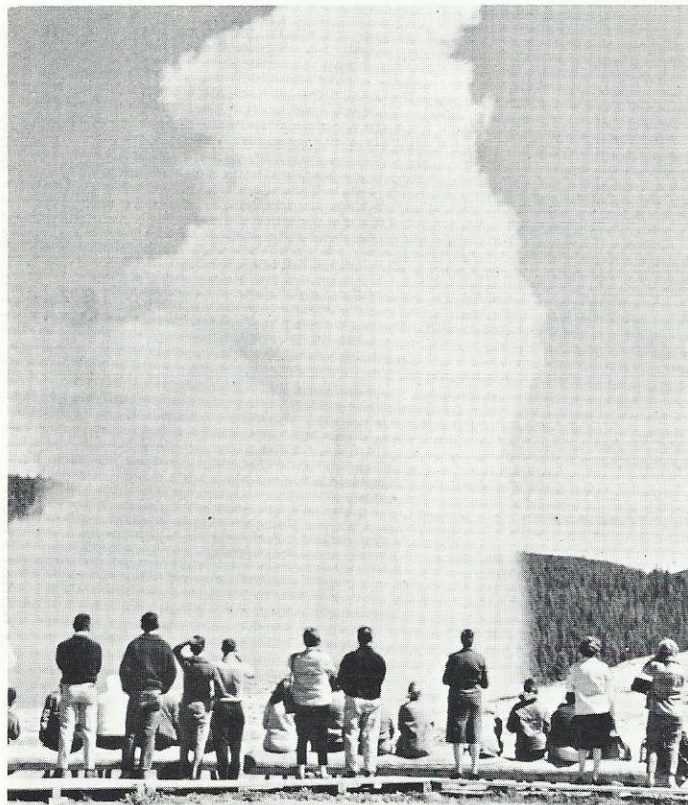
Everyone's first thought of Yellowstone is Old Faithful Geyser. Erupting approximately once every hour (actual intervals have been timed from 35 to 95 minutes) and spouting water 100 to 185 ft. in the air, this is truly the most "faithful geyser." While there are many spectacular geysers in the park, none are as reliable. Should you decide to stay at Old Faithful Inn, the rustic lodge just across from the geyser, be sure and catch the first after-dark eruption which is fully illuminated. The Old Faithful Visitor Center gives you a good opportunity to more fully understand what goes on underground to cause this great geyser.

The general headquarters of the Park are located at Mammoth Hot Springs. Many of the main buildings here were originally part of Old Fort Yellowstone. The museum features many exhibits which tell the story of the Park.

One of the most magnificent sights in the Park is the Grand Canyon of the Yellowstone. A camera with lots of color film is a real necessity to record this thrilling scene from Inspiration Point (or one of the other vantage points) where you view the Canyon and Upper and Lower Falls. Speaking of falls, Kepler Cascade of the Firehold River is a series of waterfalls ranging from approximately 90 to 150 ft. in height and a sight not to be missed.

From Norris Visitor Center, in the heart of Norris Geyser Basin, you can wander on your own, or with park naturalists, through Porcelain Basin (a sort of hollowed out bowl) where the very active steam vents create real spine tingling sound effects as you walk through. For a longer walk, the Black Basin Trail will take you through the entire area with less than two miles of walking.

Beautiful Yellowstone Lake will beckon you to linger a while and take a scenicruiser boat trip around its



OLD FAITHFUL GEYSER erupts as it always does approximately once every hour (actual intervals have been timed from 35 to 95 minutes). It spouts super heated water from 100 to 185 feet in the air.

beautiful shores. At the outlet of the lake, you'll see fishermen enjoying the many fine catches produced by this fished filled lake.

At West Thumb, you will observe more thermal activity than you ever dreamed possible — the Paint Pots, Abyss and Black Pools, and Fishing Cone, a hot spring surrounded by cold lake waters.

Experienced horseback riders will thoroughly enjoy the many trails through Yellowstone. There are plenty of horses for rent; however, a guide must accompany you on all trips into the wilderness.

Once you are in the park, whether by rent-a-car or Yellowstone Park Co. sightseeing bus (with the most friendly drivers in the world), there are hotels, motels, lodges and cabins to suit one and all.

At this point, all I can say is I wish I were there now!

FRONTIER AIRLINES provides daily round-trip service to West Yellowstone, gateway to Yellowstone National Park aboard 53-passenger, 355 mph jet-prop aircraft.





THE TRADITIONAL CHOICE IN KANSAS CITY

The Muehlebach

- Guaranteed reservations: New York 255-3138—Los Angeles 386-3700—San Francisco 392-2411

75th Anniversary Year

THE
Brown Palace
HOTEL
DENVER, COLORADO

Karl W. Mehlmann, *General Manager*

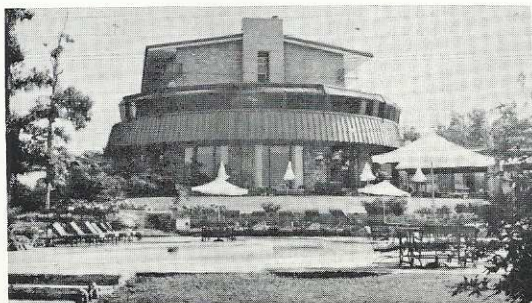


The Chase-Park Plaza

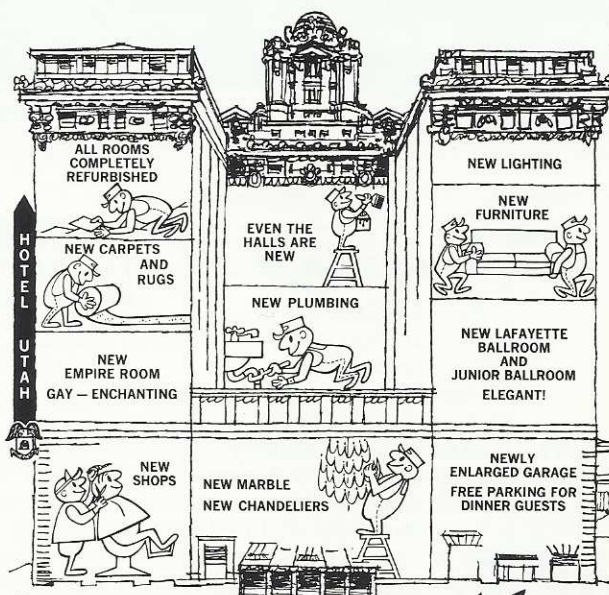
and the

Lodge of The Four Seasons

Lake Ozark, Missouri



Here's What's NEW Under Our Roof!



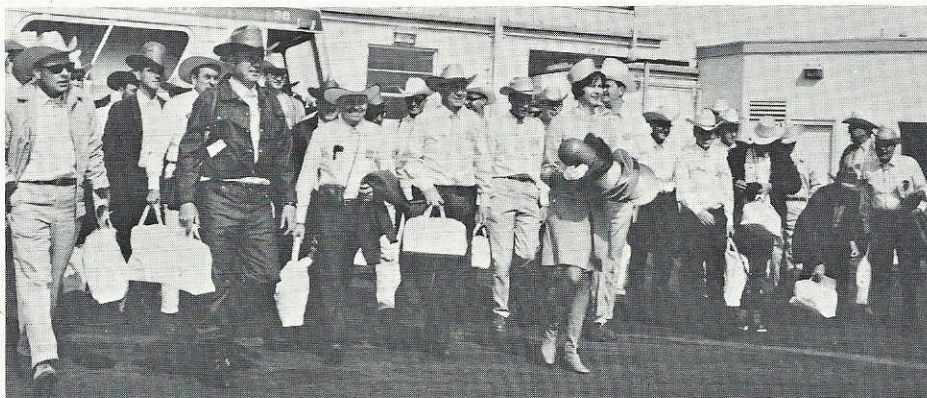
New again and fresh as a flower

HOTEL UTAH

H. N. (Hank) Aloia, General Manager

PLUS!
FREE PARKING
for
OVERNIGHT
GUESTS

Farm and Ranch Editors Fly to Elanco Bar-3 Branding Party



LEADING AGRICULTURAL editors and writers prepare to board a Frontier Airlines' Convair 580 charter to Alliance, Nebraska to take part in the farm and ranch editors Elanco Bar-3 "Branding Party." Frontier Stewardess, hands filled with western hats, sets the pace for the western dressed editors.

Fifty of the nation's leading farm and ranch editors flew via Frontier Airlines to Alliance, Nebraska to a cattle roundup and "branding party" on the famed Mule Shoe Bar Ranch near Alliance.

Purpose of the trip was to introduce a newly discovered vaccine to combat shipping fever in cattle, a complex respiratory disease. The vaccine was discovered by the Elanco Products Company of Indianapolis.

ACAPULCO BOUND



99 PASSENGERS FILLED THIS Frontier Boeing 727 on a recent charter to Acapulco and Mexico City. The charter was originated by Waste King Universal of Denver for its retailers of Waste King Products.



Edited by the
PUBLICITY DEPARTMENT
Frontier Airlines, Inc.
5900 East 39th Avenue
Denver, Colorado

E. H. GERHARDT, Dir., Publicity
NEAL AMARINO, Mgr. News Bureau
KANDEE ANDERSON



News material may be reproduced
without permission.

FRONTIER AIRLINES

5900 EAST 39TH AVENUE
DENVER, COLORADO 80207